

STATE	STATE PROJECT NUMBER	SHEET NO.	TOTAL SHEETS
N.C.	I-3819A	1	
STATE PROJECT NO.	F.A. PROJECT NO.	DESIGNER	
34192.1.2	IHS-40-2(124)	P.E.	
34192.3.1	HPPMS-040-2(41)152	R.W. UTIL.	
34192.2.GV4	IMF-040-2(145)152	CONST.	

STATE OF NORTH CAROLINA
DIVISION OF HIGHWAYS

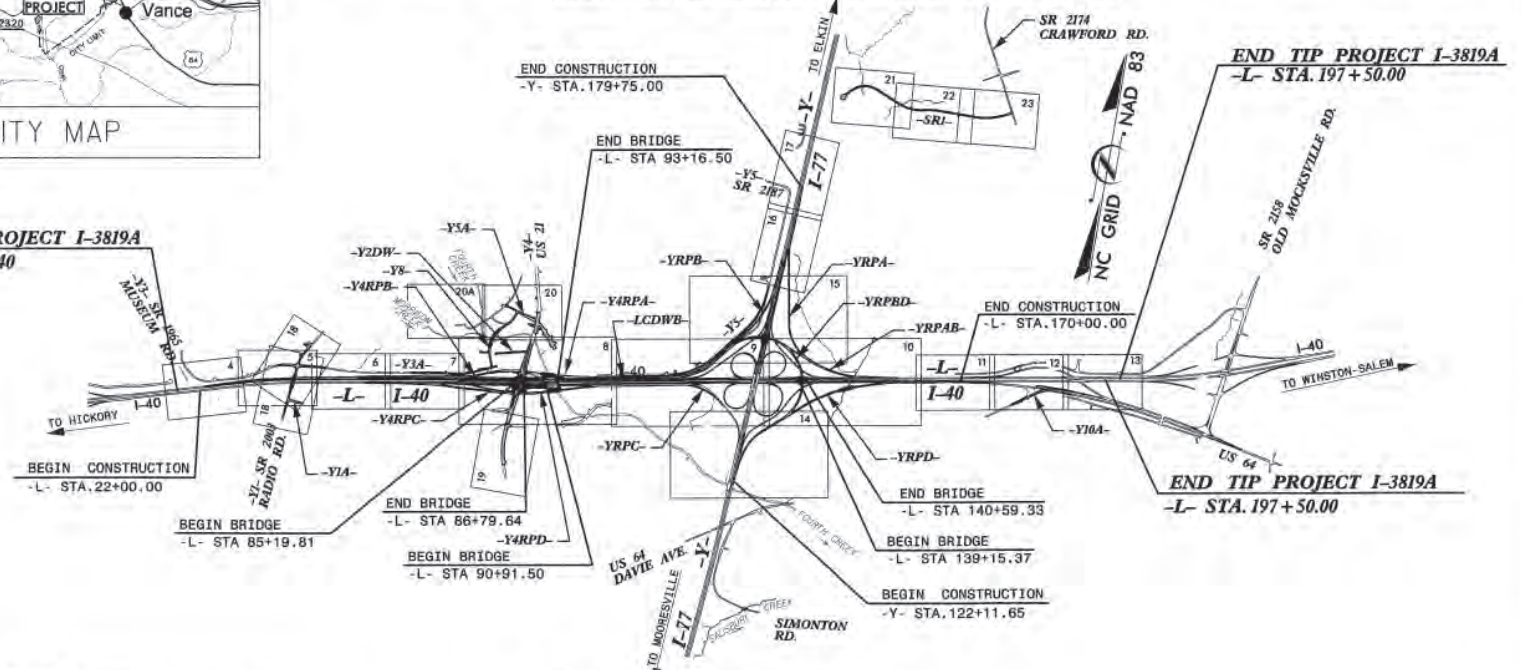
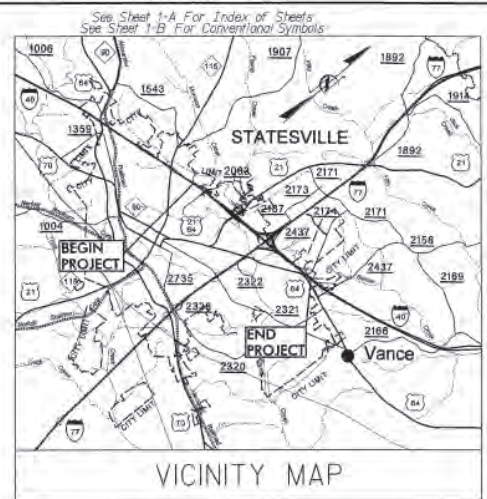
IREDELL COUNTY

LOCATION: I-40-I-77 INTERCHANGE INCLUDING I-40 FROM WEST OF SR 2003 (Radio Rd.) TO WEST OF SR 2158 (Old Mocksville Rd.) & I-77 FROM SOUTH OF I-40 TO SOUTH OF SR 2171 (Jane Sower Rd.)
TYPE OF WORK: GRADING, DRAINAGE, PAVING, ITS, SIGNALS, STRUCTURES, CULVERTS, RETAINING WALLS, AND NOISE WALLS

Part 1 of 3

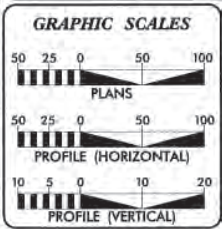
TIP PROJECT: I-3819A

CONTRACT: C202602



NCDOT CONTACT: BRENDA L. MOORE, P.E.
ROADWAY DESIGN - ENGINEERING COORDINATION

THIS IS A CONTROLLED ACCESS PROJECT
WITH ACCESS BEING LIMITED TO INTERCHANGES



DESIGN DATA

	I-40	I-77
ADT 2010	71,100	73,200
ADT 2030	99,420	109,040
DHV	10 %	9 %
D	60 %	55 %
T	19 %	20 % **
V	60 MPH	60 MPH
* TTST 14 + DUAL 5 (I-40)		
** TTST 15 + DUAL 5 (I-77)		
STATEWIDE TIER CLASSIFICATION: INTERSTATE		

PROJECT LENGTH

LENGTH ROADWAY TIP PROJECT I-3819A	=	3.260
LENGTH STRUCTURES TIP PROJECT I-3819A	=	0.100
TOTAL LENGTH OF TIP PROJECT I-3819A	=	3.360

Prepared in the Office of:
Florence & Hutcheson
CONSULTING ENGINEERS
1000 Westgate Drive, Suite 200
Charlotte, NC 28202

3RD STANDARD SPECIFICATIONS

RIGHT OF WAY DATE: DECEMBER 19, 2008

LETTING DATE: JUNE 19, 2012

DAVID C. WALLER, P.E.
PROJECT ENGINEER

BRIAN A. WILES, P.E.
PROJECT DESIGN ENGINEER

HYDRAULICS ENGINEER

[Signature]

ROADWAY DESIGN ENGINEER

[Signature]

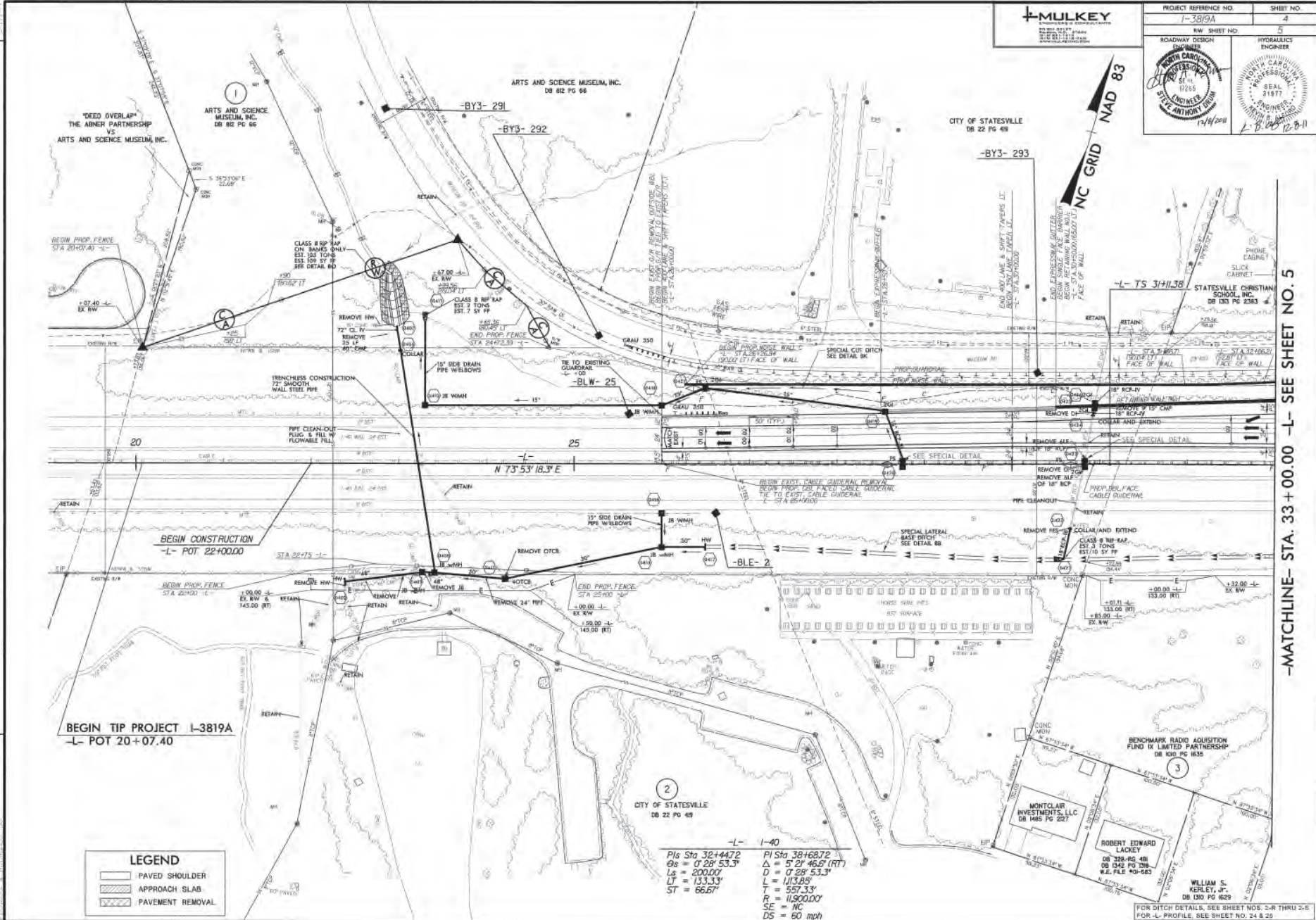
Professional Engineer Seal for David C. Waller, No. 18722, State of North Carolina, expires 12/31/12.

Professional Engineer Seal for Brian A. Wiles, No. 22406, State of North Carolina, expires 12/31/12.

DIVISION OF HIGHWAYS
STATE OF NORTH CAROLINA

STATE HIGHWAY DESIGN ENGINEER

I:\Projects\138190\138190_Roy_T1.mxd
Florence & Hutcheson, Inc.



LEGEND

	PAVED SHOULDER
	APPROACH SLAB
	PAVEMENT REMOVAL

1-40
 Pls Sta 32+44.72
 Gs = 0' 28" 53.3"
 Ls = 200.00'
 LT = 133.33'
 ST = 66.67'

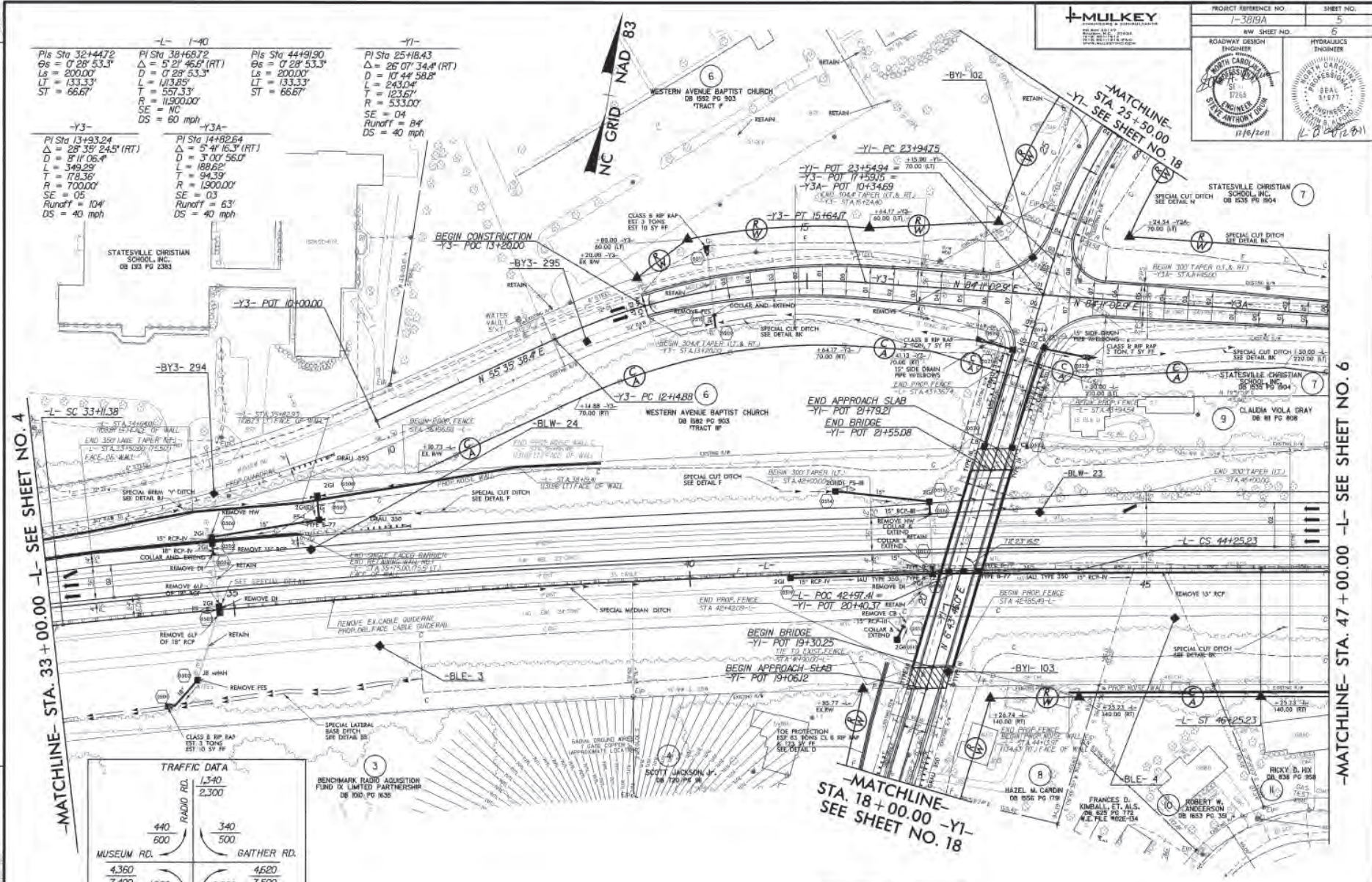
PI Sta 38+68.72
 Δ = 5' 21" 46.67' (RT)
 D = 0' 28" 53.3"
 L = 1113.88'
 T = 557.33'
 R = 115000.00'
 SE = NC
 DS = 60 mph

FOR DITCH DETAILS, SEE SHEET NOS. 2-R THRU 2-E
 FOR L-L PROFILE, SEE SHEET NO. 24 & 26

-MATCHLINE- STA. 33 + 00.00 -L- SEE SHEET NO. 5

REVISIONS

-L- 1-40 PIs Sta 32+447.2 $\Delta = 0' 28'' 53.3''$ $D = 200.00'$ $LT = 133.33'$ $ST = 66.67'$	-L- 1-40 PIs Sta 38+687.2 $\Delta = 5' 21'' 46.9''$ $D = 0' 28'' 53.3''$ $L = 113.85'$ $T = 57.33'$ $R = 11300.00'$ $SE = NC$ $DS = 60$ mph	-Y1- PIs Sta 44+919.0 $\Delta = 0' 28'' 53.3''$ $D = 200.00'$ $LT = 133.33'$ $ST = 66.67'$	-Y1- PIs Sta 25+18.43 $\Delta = 26' 07'' 34.4''$ $D = 10' 44'' 58.8''$ $L = 243.04'$ $T = 123.67'$ $R = 533.00'$ $SE = 04$ $Runoff = 84'$ $DS = 40$ mph
-Y3- PIs Sta 13+93.24 $\Delta = 28' 35'' 24.5''$ $D = 8' 11'' 06.4''$ $L = 349.29'$ $T = 174.36'$ $R = 7000.00'$ $SE = 05$ $Runoff = 104'$ $DS = 40$ mph	-Y3A- PIs Sta 14+92.64 $\Delta = 5' 41'' 16.3''$ $D = 3' 00'' 56.0''$ $L = 189.52'$ $T = 94.39'$ $R = 1300.00'$ $SE = 03$ $DS = 40$ mph		



-MATCHLINE- STA. 33 + 00.00 -L- SEE SHEET NO. 4

-MATCHLINE- STA. 47 + 00.00 -L- SEE SHEET NO. 6

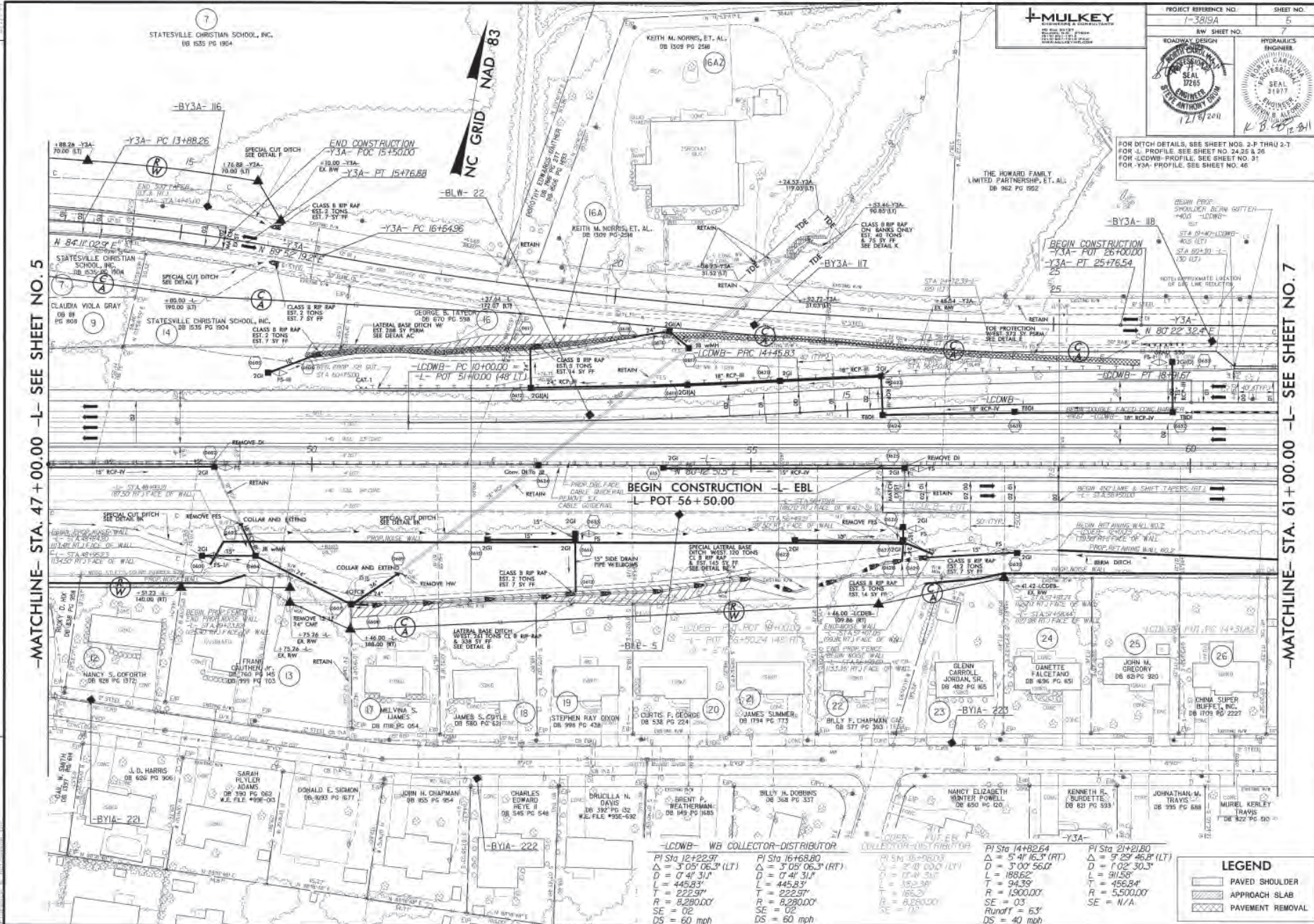
TRAFFIC DATA

	RADIO RD.		
	1,340	2,300	
	440	340	
	600	500	
MUSEUM RD.	4,360	4,620	GATHER RD.
	7,400	7,500	
	1,920	2,280	
	2,800	3,000	
2010 AVERAGE	4,760		
2030 DAILY TRAFFIC	7,000		

LEGEND

- PAVED SHOULDER
- APPROACH SLAB
- PAVEMENT REMOVAL

FOR DITCH DETAILS, SEE SHEET NOS. 2-R THRU 2-R
 FOR -L- PROFILE, SEE SHEET NO. 25
 FOR -Y1- PROFILE, SEE SHEET NO. 44
 FOR -Y3- PROFILE, SEE SHEET NO. 45
 FOR -Y3A- PROFILE, SEE SHEET NO. 46
 FOR PAVEMENT BRIDGE RELATIONSHIP SKETCHES, SEE SHEET NO. 2-AC



-MATCHLINE- STA. 47 + 00.00 -L- SEE SHEET NO. 5

-MATCHLINE- STA. 61 + 00.00 -L- SEE SHEET NO. 7

7
STATESVILLE CHRISTIAN SCHOOL, INC.
DB 535 PG 1964

NC GRID NAD 83

MULKEY
INCORPORATED
REGISTERED PROFESSIONAL ENGINEER
NO. 10077
EXPIRES 12/31/2011

PROJECT REFERENCE NO. 1-3819A	SHEET NO. 5
B.W. SHEET NO. 7	HYDRAULICS ENGINEER K. B. COOPER REGISTERED PROFESSIONAL ENGINEER NO. 31977 EXPIRES 12/31/2011
ROADWAY DESIGN K. B. COOPER REGISTERED PROFESSIONAL ENGINEER NO. 31977 EXPIRES 12/31/2011	SEAL 31977

FOR DITCH DETAILS, SEE SHEET NOS. 2-P THRU 2-T
FOR L PROFILE, SEE SHEET NO. 24.25 & 26
FOR LCDBW PROFILE, SEE SHEET NO. 31
FOR Y3A PROFILE, SEE SHEET NO. 46

BEGIN CONSTRUCTION - EBL
-L- POT 56 + 50.00

LCDBW - WB COLLECTOR-DISTRIBUTOR

PI Sta 12+22.97	PI Sta 16+68.80
$\Delta = 3'05'06.3''$ (LT)	$\Delta = 3'05'06.3''$ (RT)
D = 0'41'31"	D = 0'41'31"
L = 445.83'	L = 445.83'
T = 222.97'	T = 222.97'
SE = 03	SE = 03
Runoff = 6.3'	Runoff = 6.3'
DS = 60 mph	DS = 60 mph

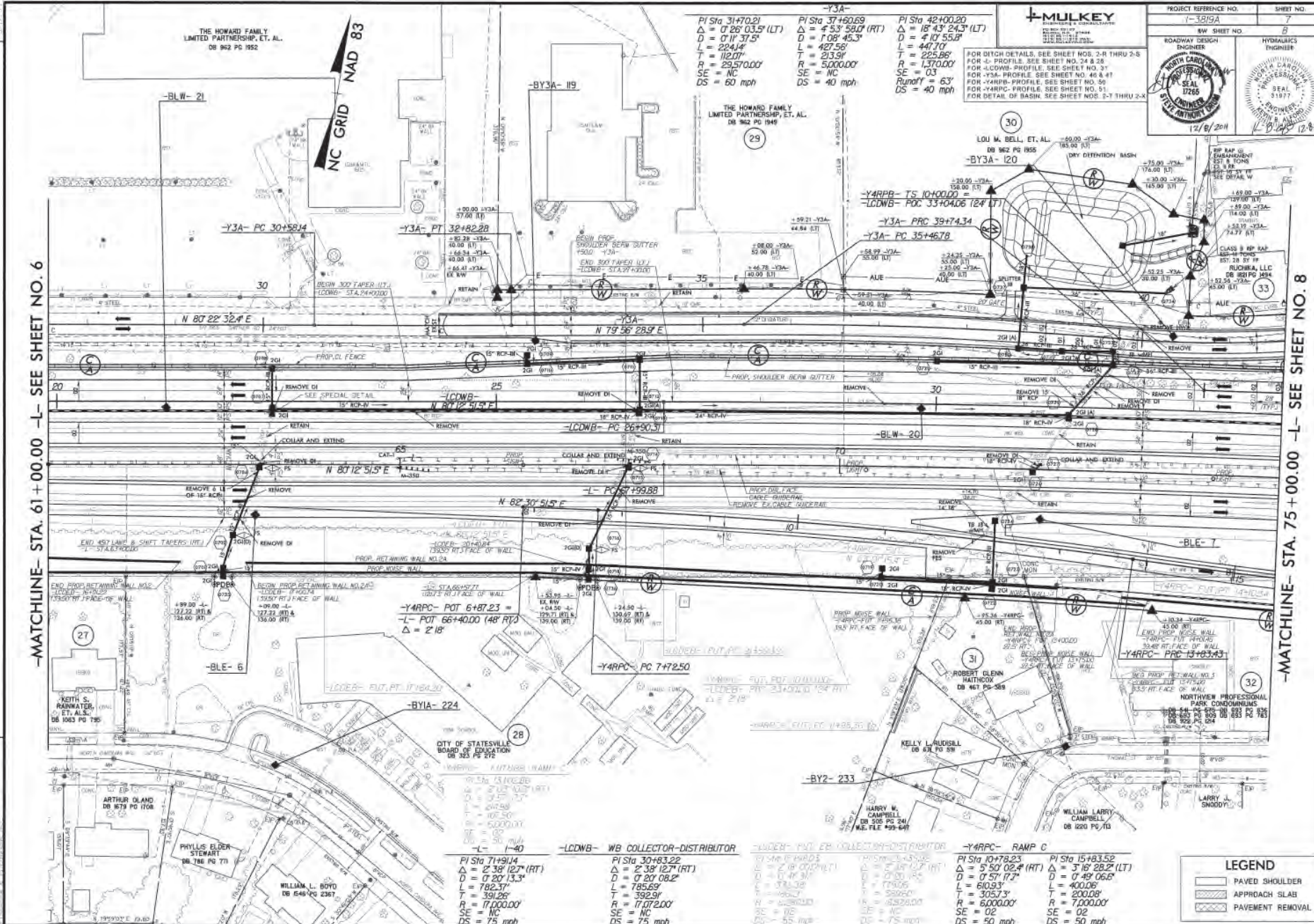
PI Sta 14+82.64

$\Delta = 5'41'16.3''$ (RT)	$\Delta = 5'29'45.8''$ (LT)
D = 3'00'56.0"	D = 1'02'30.3"
L = 1885.2'	L = 91.58'
T = 94.39'	T = 456.84'
R = 1500.00'	R = 5500.00'
SE = 03	SE = N/A
Runoff = 6.3'	Runoff = N/A
DS = 40 mph	DS = 40 mph

LEGEND

- PAVED SHOULDER
- APPROACH SLAB
- PAVEMENT REMOVAL

REVISIONS



-MATCHLINE- STA. 61 + 00.00 -L- SEE SHEET NO. 6

-MATCHLINE- STA. 75 + 00.00 -L- SEE SHEET NO. 8

<p>PI Sta 31470.21 $\Delta = 0' 26'' 03.5''$ (LT) $D = 0' 11'' 37.5''$ $L = 224.4'$ $T = 112.0'$ $R = 29,570.00'$ $SE = NC$ $DS = 60$ mph</p>	<p>PI Sta 37480.69 $\Delta = 4' 53'' 58.0''$ (RT) $D = 1' 08'' 45.3''$ $L = 427.56'$ $T = 213.54'$ $R = 5,000.00'$ $SE = NC$ $DS = 40$ mph</p>	<p>PI Sta 48+00.20 $\Delta = 18' 43'' 24.3''$ (LT) $D = 4' 10'' 55.8''$ $L = 447.70'$ $T = 225.85'$ $R = 1,370.00'$ $SE = 03$ $Runoff = 63'$ $DS = 40$ mph</p>
---	--	--



PROJECT REFERENCE NO. 1-1819A
 RW SHEET NO. B
 HYDRAULICS ENGINEER

12/8/2011

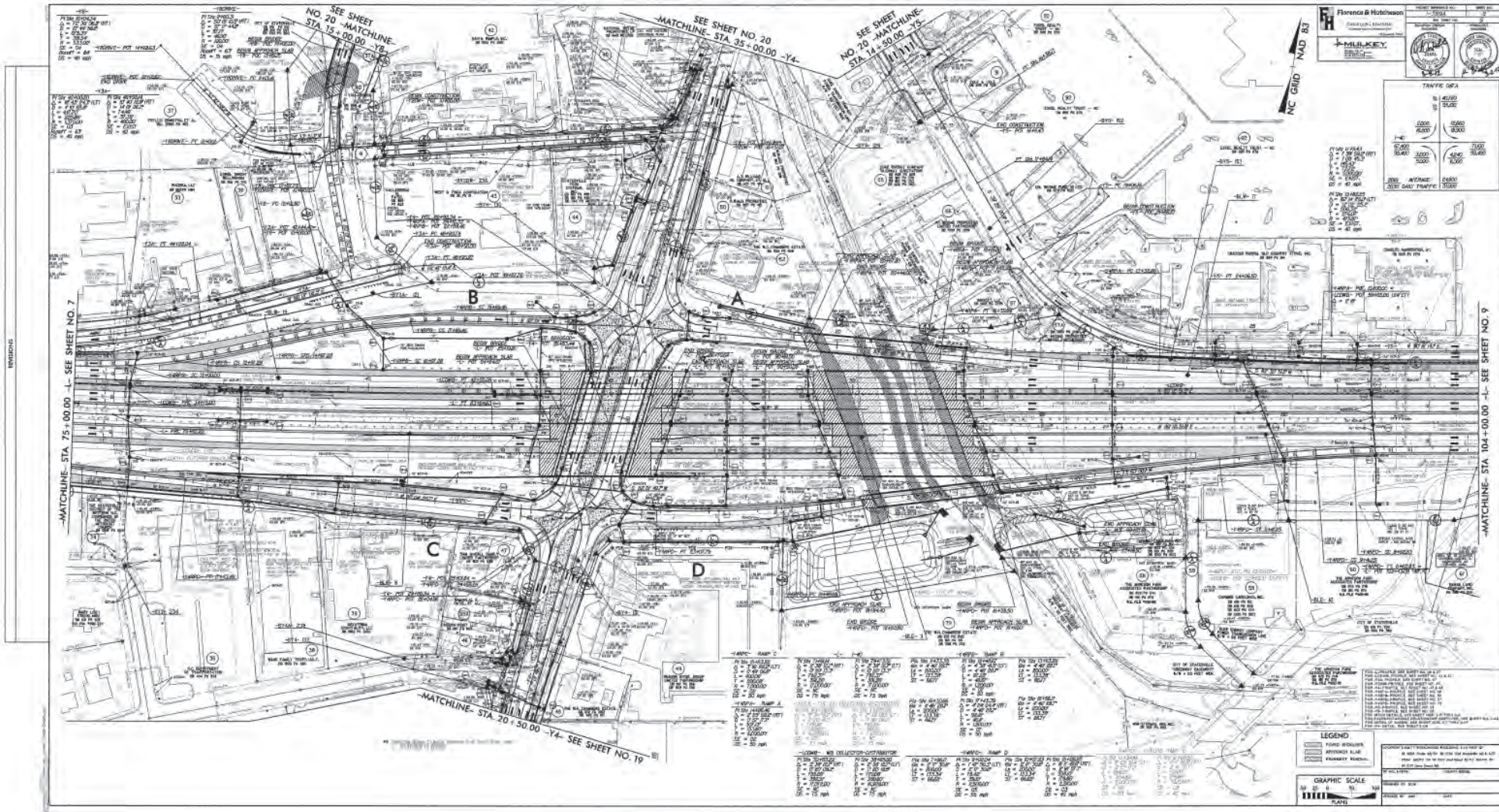
12-8-11

<p>PI Sta 71491.4 $\Delta = 2' 38'' 12.7''$ (RT) $D = 0' 20'' 13.3''$ $L = 782.37'$ $T = 391.26'$ $R = 71,000.00'$ $SE = NC$ $DS = 75$ mph</p>	<p>PI Sta 30+83.22 $\Delta = 2' 38'' 12.7''$ (RT) $D = 0' 20'' 08.2''$ $L = 785.69'$ $T = 392.9'$ $R = 17,072.00'$ $SE = NC$ $DS = 75$ mph</p>	<p>PI Sta 15+83.52 $\Delta = 3' 18'' 28.2''$ (LT) $D = 0' 49'' 06.6''$ $L = 400.06'$ $T = 200.08'$ $R = 5,000.00'$ $SE = 02$ $DS = 50$ mph</p>
--	--	--

LEGEND

- PAVED SHOULDER
- APPROACH SLAB
- PAVEMENT REMOVAL

REVISIONS



SEE SHEET NO. 20
MATCHLINE STA. 15 + 00.00

SEE SHEET NO. 20
MATCHLINE STA. 35 + 00.00 -14-

SEE SHEET NO. 20
MATCHLINE STA. 4 + 50.00 -15-

SEE SHEET NO. 7
MATCHLINE STA. 75 + 00.00 -L-

SEE SHEET NO. 9
MATCHLINE STA. 104 + 00.00 -L-

NAD 83
NC GRID

Florence & Hutchison
CONSTRUCTION CONSULTANTS
MURKEY

Traffic Data Table:

ADVISORY	DESIGN
1000	1500
5000	7500
10000	15000
15000	22500
20000	30000
25000	37500
30000	45000
35000	52500
40000	60000
45000	67500
50000	75000

SEE: MICHIGAN STATE DEPT. OF TRANSPORTATION, TRAFFIC MANUAL, 2008

MATCHLINE STA. 20 + 50.00 -14- SEE SHEET NO. 19

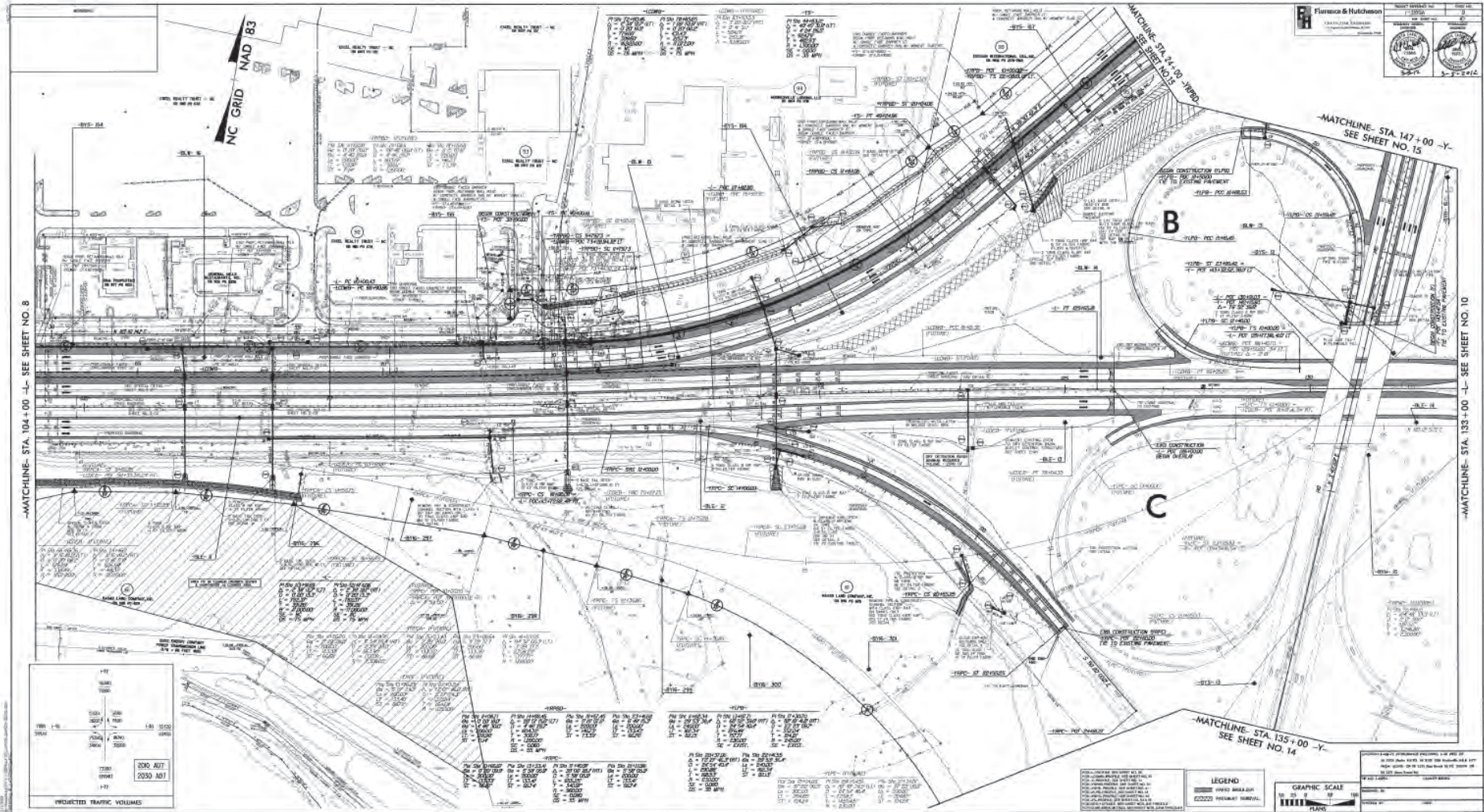
SCHEDULE A - NO DELIVERABLES		
NO.	DESCRIPTION	DATE
101	PROVISIONAL STATEMENT OF WORK	06/20/14
102	PROVISIONAL STATEMENT OF WORK - REVISED	07/29/14
103	PROVISIONAL STATEMENT OF WORK - REVISED	08/20/14
104	PROVISIONAL STATEMENT OF WORK - REVISED	09/02/14
105	PROVISIONAL STATEMENT OF WORK - REVISED	10/01/14
106	PROVISIONAL STATEMENT OF WORK - REVISED	11/03/14
107	PROVISIONAL STATEMENT OF WORK - REVISED	11/10/14
108	PROVISIONAL STATEMENT OF WORK - REVISED	11/17/14
109	PROVISIONAL STATEMENT OF WORK - REVISED	11/24/14
110	PROVISIONAL STATEMENT OF WORK - REVISED	12/01/14
111	PROVISIONAL STATEMENT OF WORK - REVISED	12/08/14
112	PROVISIONAL STATEMENT OF WORK - REVISED	12/15/14
113	PROVISIONAL STATEMENT OF WORK - REVISED	12/22/14
114	PROVISIONAL STATEMENT OF WORK - REVISED	12/29/14
115	PROVISIONAL STATEMENT OF WORK - REVISED	01/05/15
116	PROVISIONAL STATEMENT OF WORK - REVISED	01/12/15
117	PROVISIONAL STATEMENT OF WORK - REVISED	01/19/15
118	PROVISIONAL STATEMENT OF WORK - REVISED	01/26/15
119	PROVISIONAL STATEMENT OF WORK - REVISED	02/02/15
120	PROVISIONAL STATEMENT OF WORK - REVISED	02/09/15
121	PROVISIONAL STATEMENT OF WORK - REVISED	02/16/15
122	PROVISIONAL STATEMENT OF WORK - REVISED	02/23/15
123	PROVISIONAL STATEMENT OF WORK - REVISED	02/27/15
124	PROVISIONAL STATEMENT OF WORK - REVISED	03/06/15
125	PROVISIONAL STATEMENT OF WORK - REVISED	03/13/15
126	PROVISIONAL STATEMENT OF WORK - REVISED	03/20/15
127	PROVISIONAL STATEMENT OF WORK - REVISED	03/27/15
128	PROVISIONAL STATEMENT OF WORK - REVISED	04/03/15
129	PROVISIONAL STATEMENT OF WORK - REVISED	04/10/15
130	PROVISIONAL STATEMENT OF WORK - REVISED	04/17/15
131	PROVISIONAL STATEMENT OF WORK - REVISED	04/24/15
132	PROVISIONAL STATEMENT OF WORK - REVISED	05/01/15
133	PROVISIONAL STATEMENT OF WORK - REVISED	05/08/15
134	PROVISIONAL STATEMENT OF WORK - REVISED	05/15/15
135	PROVISIONAL STATEMENT OF WORK - REVISED	05/22/15
136	PROVISIONAL STATEMENT OF WORK - REVISED	05/29/15
137	PROVISIONAL STATEMENT OF WORK - REVISED	06/05/15
138	PROVISIONAL STATEMENT OF WORK - REVISED	06/12/15
139	PROVISIONAL STATEMENT OF WORK - REVISED	06/19/15
140	PROVISIONAL STATEMENT OF WORK - REVISED	06/26/15
141	PROVISIONAL STATEMENT OF WORK - REVISED	07/03/15
142	PROVISIONAL STATEMENT OF WORK - REVISED	07/10/15
143	PROVISIONAL STATEMENT OF WORK - REVISED	07/17/15
144	PROVISIONAL STATEMENT OF WORK - REVISED	07/24/15
145	PROVISIONAL STATEMENT OF WORK - REVISED	07/31/15
146	PROVISIONAL STATEMENT OF WORK - REVISED	08/07/15
147	PROVISIONAL STATEMENT OF WORK - REVISED	08/14/15
148	PROVISIONAL STATEMENT OF WORK - REVISED	08/21/15
149	PROVISIONAL STATEMENT OF WORK - REVISED	08/28/15
150	PROVISIONAL STATEMENT OF WORK - REVISED	09/04/15
151	PROVISIONAL STATEMENT OF WORK - REVISED	09/11/15
152	PROVISIONAL STATEMENT OF WORK - REVISED	09/18/15
153	PROVISIONAL STATEMENT OF WORK - REVISED	09/25/15
154	PROVISIONAL STATEMENT OF WORK - REVISED	10/02/15
155	PROVISIONAL STATEMENT OF WORK - REVISED	10/09/15
156	PROVISIONAL STATEMENT OF WORK - REVISED	10/16/15
157	PROVISIONAL STATEMENT OF WORK - REVISED	10/23/15
158	PROVISIONAL STATEMENT OF WORK - REVISED	10/30/15
159	PROVISIONAL STATEMENT OF WORK - REVISED	11/06/15
160	PROVISIONAL STATEMENT OF WORK - REVISED	11/13/15
161	PROVISIONAL STATEMENT OF WORK - REVISED	11/20/15
162	PROVISIONAL STATEMENT OF WORK - REVISED	11/27/15
163	PROVISIONAL STATEMENT OF WORK - REVISED	12/04/15
164	PROVISIONAL STATEMENT OF WORK - REVISED	12/11/15
165	PROVISIONAL STATEMENT OF WORK - REVISED	12/18/15
166	PROVISIONAL STATEMENT OF WORK - REVISED	12/25/15
167	PROVISIONAL STATEMENT OF WORK - REVISED	01/01/16
168	PROVISIONAL STATEMENT OF WORK - REVISED	01/08/16
169	PROVISIONAL STATEMENT OF WORK - REVISED	01/15/16
170	PROVISIONAL STATEMENT OF WORK - REVISED	01/22/16
171	PROVISIONAL STATEMENT OF WORK - REVISED	01/29/16
172	PROVISIONAL STATEMENT OF WORK - REVISED	02/05/16
173	PROVISIONAL STATEMENT OF WORK - REVISED	02/12/16
174	PROVISIONAL STATEMENT OF WORK - REVISED	02/19/16
175	PROVISIONAL STATEMENT OF WORK - REVISED	02/26/16
176	PROVISIONAL STATEMENT OF WORK - REVISED	03/05/16
177	PROVISIONAL STATEMENT OF WORK - REVISED	03/12/16
178	PROVISIONAL STATEMENT OF WORK - REVISED	03/19/16
179	PROVISIONAL STATEMENT OF WORK - REVISED	03/26/16
180	PROVISIONAL STATEMENT OF WORK - REVISED	04/02/16
181	PROVISIONAL STATEMENT OF WORK - REVISED	04/09/16
182	PROVISIONAL STATEMENT OF WORK - REVISED	04/16/16
183	PROVISIONAL STATEMENT OF WORK - REVISED	04/23/16
184	PROVISIONAL STATEMENT OF WORK - REVISED	04/30/16
185	PROVISIONAL STATEMENT OF WORK - REVISED	05/07/16
186	PROVISIONAL STATEMENT OF WORK - REVISED	05/14/16
187	PROVISIONAL STATEMENT OF WORK - REVISED	05/21/16
188	PROVISIONAL STATEMENT OF WORK - REVISED	05/28/16
189	PROVISIONAL STATEMENT OF WORK - REVISED	06/04/16
190	PROVISIONAL STATEMENT OF WORK - REVISED	06/11/16
191	PROVISIONAL STATEMENT OF WORK - REVISED	06/18/16
192	PROVISIONAL STATEMENT OF WORK - REVISED	06/25/16
193	PROVISIONAL STATEMENT OF WORK - REVISED	07/02/16
194	PROVISIONAL STATEMENT OF WORK - REVISED	07/09/16
195	PROVISIONAL STATEMENT OF WORK - REVISED	07/16/16
196	PROVISIONAL STATEMENT OF WORK - REVISED	07/23/16
197	PROVISIONAL STATEMENT OF WORK - REVISED	07/30/16
198	PROVISIONAL STATEMENT OF WORK - REVISED	08/06/16
199	PROVISIONAL STATEMENT OF WORK - REVISED	08/13/16
200	PROVISIONAL STATEMENT OF WORK - REVISED	08/20/16

LEGEND

PROPOSED ROADWAY
EXISTING ROADWAY
CONSTRUCTION AREA
UTILITY

GRAPHIC SCALE

0' 10' 20' 30'



Fluorine & Hutchinson
 CONSULTING ENGINEERS
 1111 S. 10th Street, Suite 100
 Raleigh, NC 27603
 Phone: (919) 876-1111
 Fax: (919) 876-1112
 www.fluorine-hutchinson.com

-MATCHLINE- STA. 104+00 -L- SEE SHEET NO. 8

-MATCHLINE- STA. 147+00 -Y- SEE SHEET NO. 15

-MATCHLINE- STA. 133+00 -L- SEE SHEET NO. 10

-MATCHLINE- STA. 135+00 -Y- SEE SHEET NO. 14

PROJECTED TRAFFIC VOLUMES

111	1581	1990		
1581	2090	2599		
2090	2599	3108		
2599	3108	3617		
3108	3617	4126		
3617	4126	4635		
4126	4635	5144		
4635	5144	5653		
5144	5653	6162		
5653	6162	6671		
6162	6671	7180		
7180	7689	8198		
7689	8198	8707		
8198	8707	9216		
9216	9725	10234		
10234	10743	11252		
11252	11761	12270		
12270	12779	13288		
13288	13797	14306		
14306	14815	15324		
15324	15833	16342		
16342	16851	17360		
17360	17869	18378		
18378	18887	19396		
19396	19905	20414		
20414	20923	21432		
21432	21941	22450		
22450	22959	23468		
23468	23977	24486		
24486	24995	25504		
25504	26013	26522		
26522	27031	27540		
27540	28049	28558		
28558	29067	29576		
29576	30085	30594		
30594	31103	31612		
31612	32121	32630		
32630	33139	33648		
33648	34157	34666		
34666	35175	35684		
35684	36193	36702		
36702	37211	37720		
37720	38229	38738		
38738	39247	39756		
39756	40265	40774		
40774	41283	41792		
41792	42301	42810		
42810	43319	43828		
43828	44337	44846		
44846	45355	45864		
45864	46373	46882		
46882	47391	47900		
47900	48409	48918		
48918	49427	49936		
49936	50445	50954		
50954	51463	51972		
51972	52481	52990		
52990	53499	54008		
54008	54517	55026		
55026	55535	56044		
56044	56553	57062		
57062	57571	58080		
58080	58589	59098		
59098	59607	60116		
60116	60625	61134		
61134	61643	62152		
62152	62661	63170		
63170	63679	64188		
64188	64697	65206		
65206	65715	66224		
66224	66733	67242		
67242	67751	68260		
68260	68769	69278		
69278	69787	70296		
70296	70805	71314		
71314	71823	72332		
72332	72841	73350		
73350	73859	74368		
74368	74877	75386		
75386	75895	76404		
76404	76913	77422		
77422	77931	78440		
78440	78949	79458		
79458	79967	80476		
80476	80985	81494		
81494	81999	82503		
82503	83007	83511		
83511	84015	84519		
84519	85023	85527		
85527	86031	86535		
86535	87039	87543		
87543	88047	88551		
88551	89055	89559		
89559	90063	90567		
90567	91071	91575		
91575	92079	92583		
92583	93087	93591		
93591	94095	94599		
94599	95103	95607		
95607	96111	96615		
96615	97119	97623		
97623	98127	98631		
98631	99135	99639		
99639	100143	100647		
100647	101151	101655		
101655	102159	102663		
102663	103167	103671		
103671	104175	104679		
104679	105183	105687		
105687	106191	106695		
106695	107199	107703		
107703	108207	108711		
108711	109215	109719		
109719	110223	110727		
110727	111231	111735		
111735	112239	112743		
112743	113247	113751		
113751	114255	114759		
114759	115263	115767		
115767	116271	116775		
116775	117279	117783		
117783	118287	118791		
118791	119295	119799		
119799	120303	120807		
120807	121311	121815		
121815	122319	122823		
122823	123327	123831		
123831	124335	124839		
124839	125343	125847		
125847	126351	126855		
126855	127359	127863		
127863	128367	128871		
128871	129375	129879		
129879	130383	130887		
130887	131391	131895		
131895	132399	132903		
132903	133407	133911		
133911	134415	134919		
134919	135423	135927		
135927	136431	136935		
136935	137439	137943		
137943	138447	138951		
138951	139455	139959		
139959	140463	140967		
140967	141471	141975		
141975	142479	142983		
142983	143487	143991		
143991	144495	145000		

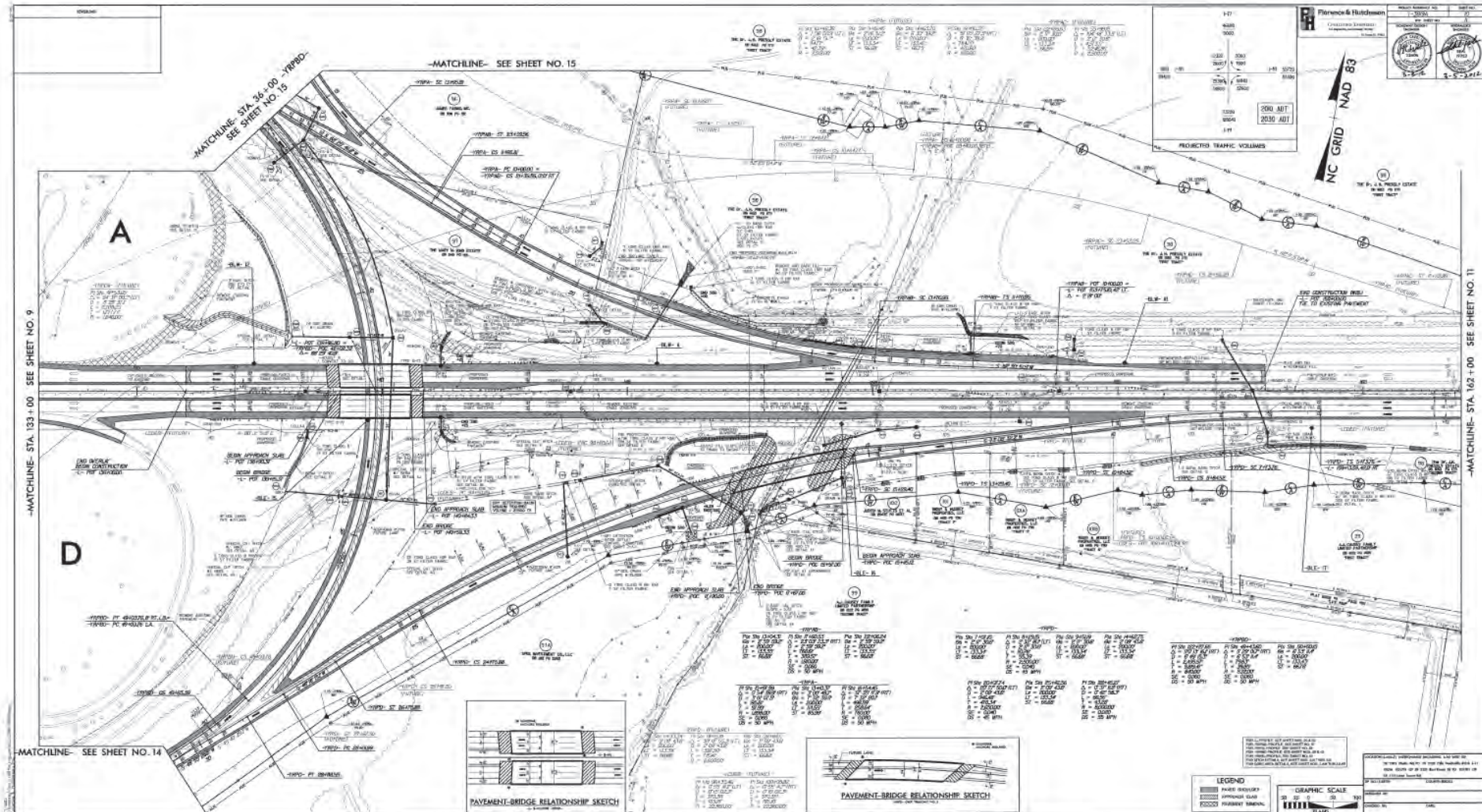
LEGEND

- PROPOSED BRIDGE
- EXISTING BRIDGE
- PROPOSED ROADWAY
- EXISTING ROADWAY
- PROPOSED SIDEWALK
- EXISTING SIDEWALK
- PROPOSED BIKEWAY
- EXISTING BIKEWAY
- PROPOSED UTILITY
- EXISTING UTILITY
- PROPOSED TREE
- EXISTING TREE
- PROPOSED FENCE
- EXISTING FENCE
- PROPOSED SIGN
- EXISTING SIGN
- PROPOSED LIGHT
- EXISTING LIGHT
- PROPOSED CURB
- EXISTING CURB
- PROPOSED DRAINAGE
- EXISTING DRAINAGE
- PROPOSED EROSION CONTROL
- EXISTING EROSION CONTROL

GRAPHIC SCALE

1" = 100'

0' 10' 20' 30' 40' 50' 60' 70' 80' 90' 100'



-MATCHLINE- STA. 133+00 - SEE SHEET NO. 9

-MATCHLINE- STA. 36+00 - WYBDO - SEE SHEET NO. 15

-MATCHLINE- SEE SHEET NO. 15

-MATCHLINE- SEE SHEET NO. 14

-MATCHLINE- STA. 102+00 - SEE SHEET NO. 11

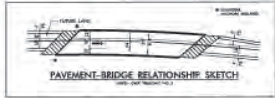
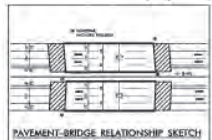
Florence & Hutchman
 CONSULTING ENGINEERS
 1000 WEST 10TH AVENUE
 DENVER, CO 80202
 PHONE: (303) 733-1100
 FAX: (303) 733-1101
 WWW: WWW.FLORENCE-HUTCHMAN.COM

PREDICTED TRAFFIC VOLUMES

SECTION	ADT	PM	AM
100+00 TO 105+00	1000	1000	1000
105+00 TO 110+00	1000	1000	1000
110+00 TO 115+00	1000	1000	1000
115+00 TO 120+00	1000	1000	1000
120+00 TO 125+00	1000	1000	1000
125+00 TO 130+00	1000	1000	1000
130+00 TO 135+00	1000	1000	1000
135+00 TO 140+00	1000	1000	1000
140+00 TO 145+00	1000	1000	1000
145+00 TO 150+00	1000	1000	1000

PILING

NO.	TYPE	LENGTH (FT)	SPACING (FT)	GROUP
1	HP 12X50	40	10	1
2	HP 12X50	40	10	1
3	HP 12X50	40	10	1
4	HP 12X50	40	10	1
5	HP 12X50	40	10	1
6	HP 12X50	40	10	1
7	HP 12X50	40	10	1
8	HP 12X50	40	10	1
9	HP 12X50	40	10	1
10	HP 12X50	40	10	1
11	HP 12X50	40	10	1
12	HP 12X50	40	10	1
13	HP 12X50	40	10	1
14	HP 12X50	40	10	1
15	HP 12X50	40	10	1
16	HP 12X50	40	10	1
17	HP 12X50	40	10	1
18	HP 12X50	40	10	1
19	HP 12X50	40	10	1
20	HP 12X50	40	10	1



LEGEND

- PAVED SURFACE
- APPROACH SLAB
- PROPOSED PAVEMENT

GRAPHIC SCALE
 0 10 20 30

FH Florence & Hutcheson
CONSULTING ENGINEERS
11271 Greenway Way, Suite 100, Raleigh, NC 27617
REVISIONS: See PG. 9450

PROJECT REFERENCE NO. 1-3819A	SHEET NO. 11
R/W SHEET NO. 12	HYDRAULICS ENGINEER SEAL 22606 DAVID C. WALKER 12-12-11
ROADWAY DESIGN ENGINEER SEAL 22606 DAVID C. WALKER 12-12-11	PROFESSIONAL ENGINEER SEAL 19732 JAMES HUTCHESON 12-12-2011

YRPAC- (FUTURE)
 Pts Sta 12+53.36 PI Sta 14+21.60 Pts Sta 15+89.59
 @s = 3°47'39.9" Δ = 7°41'55.1" (RT) @s = 3°47'39.9"
 LS = 200.00' D = 3°47'39.9" Ls = 200.00'
 LT = 133.36' L = 202.89' LT = 133.36'
 ST = 66.69' T = 101.67' ST = 66.69'
 R = 1510.00' R = 1510.00'

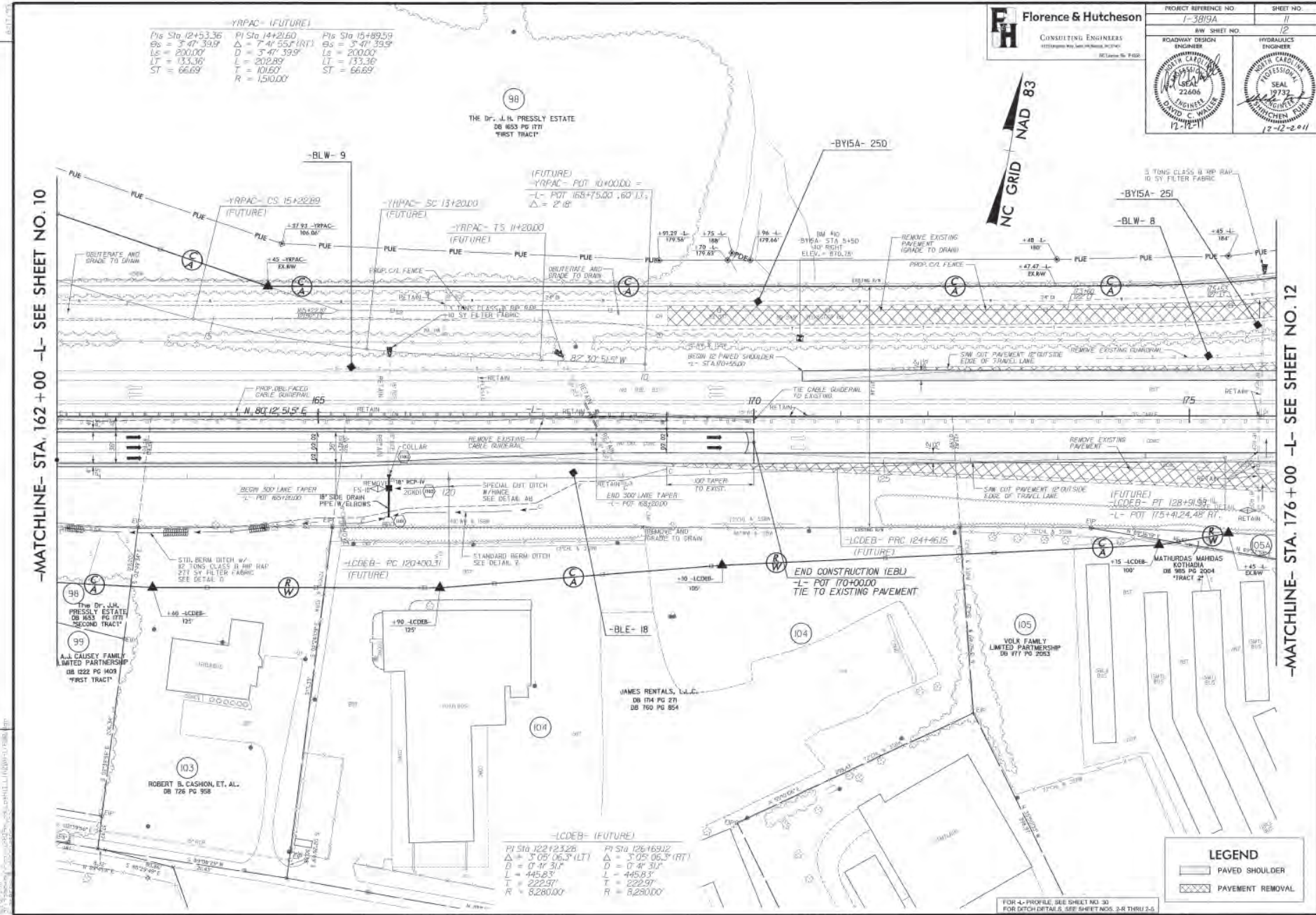
98

THE DR. J. N. PRESSLY ESTATE
DB 853 PG 1771
FIRST TRACT



-MATCHLINE- STA. 162 + 00 -L- SEE SHEET NO. 10

-MATCHLINE- STA. 176 + 00 -L- SEE SHEET NO. 12



LCDEB- (FUTURE)
 Pts Sta 122+23.26 PI Sta 126+169.12
 Δ = 3°05'06.3" (LT) Δ = 3°05'06.3" (RT)
 D = 0°41'31" D = 0°41'31"
 L = 445.83' L = 445.83'
 T = 222.91' T = 222.91'
 R = 8,280.00' R = 8,280.00'

LEGEND

	PAVED SHOULDER
	PAVEMENT REMOVAL

FOR 4'-PROFILE, SEE SHEET NO. 30
FOR DITCH DETAILS, SEE SHEET NOS. 3-R THRU 3-6

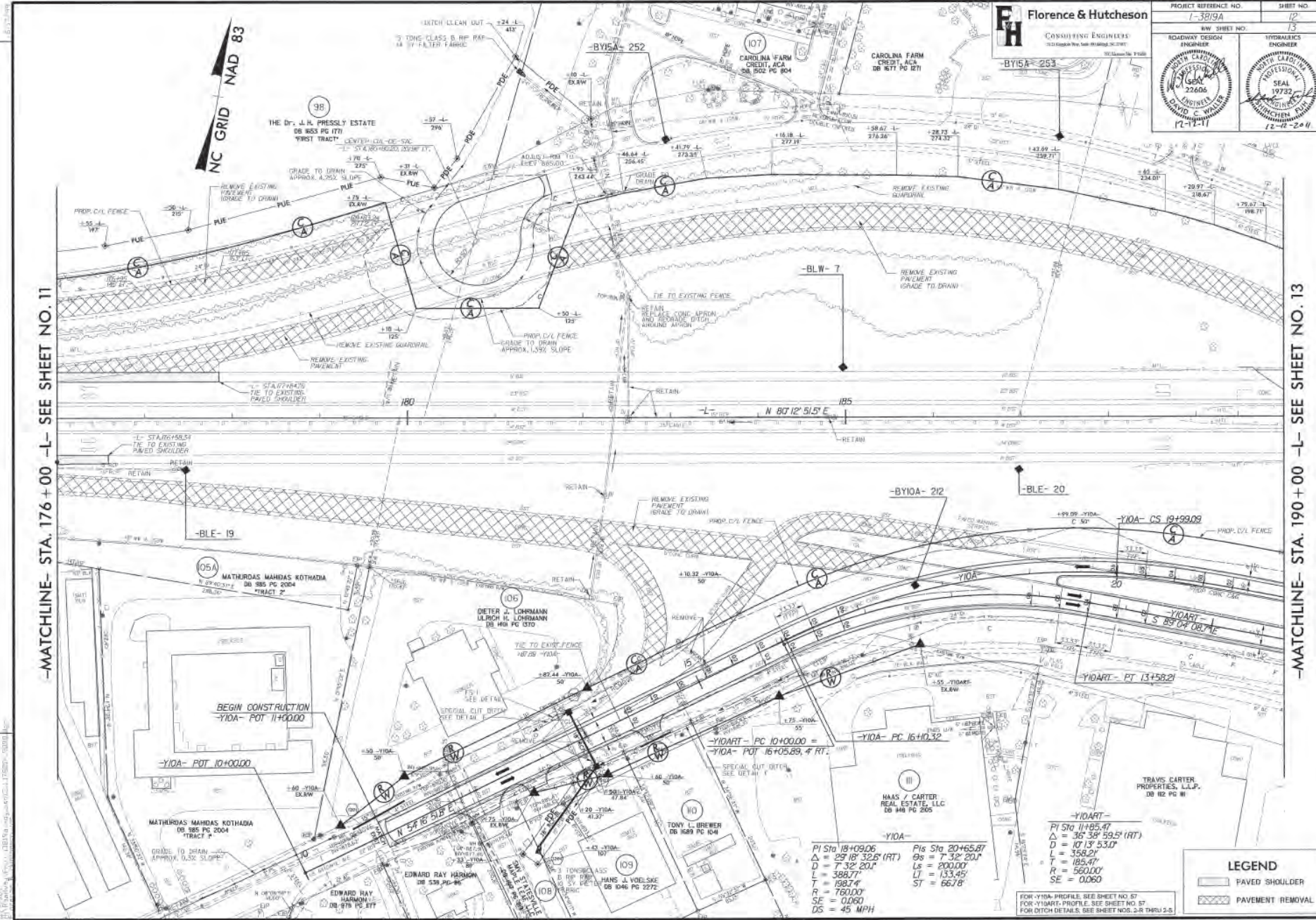
REVISIONS

DATE: 05/11/11

SCALE: 1" = 40' (PLAN)

FH Florence & Hutcheson
 CONSULTING ENGINEERS
 1512 Poplar Ave. Suite 1000 Memphis, TN 38104
 (901) 525-1100

PROJECT REFERENCE NO. 1-3819A	SHEET NO. 12
RHW SHEET NO. 13	HYDRAULICS ENGINEER



-MATCHLINE- STA. 176+00 -L- SEE SHEET NO. 11

-MATCHLINE- STA. 190+00 -L- SEE SHEET NO. 13

REVISIONS

$PI Sta 18+09.06$
 $\Delta = 29.18' 32.6' (RT)$
 $D = 7.32' 20.1'$
 $L = 388.77'$
 $T = 198.74'$
 $R = 760.00'$
 $SE = 0.060$
 $DS = 45 MPH$

$PIs Sta 20+65.87$
 $\Delta = 7.38' 20.1'$
 $L = 200.00'$
 $LT = 133.45'$
 $ST = 66.78'$

$PI Sta 11+95.47$
 $\Delta = 36.38' 59.5' (RT)$
 $L = 107.13' 53.0'$
 $T = 358.29'$
 $R = 185.47'$
 $R = 560.00'$
 $SE = 0.060$

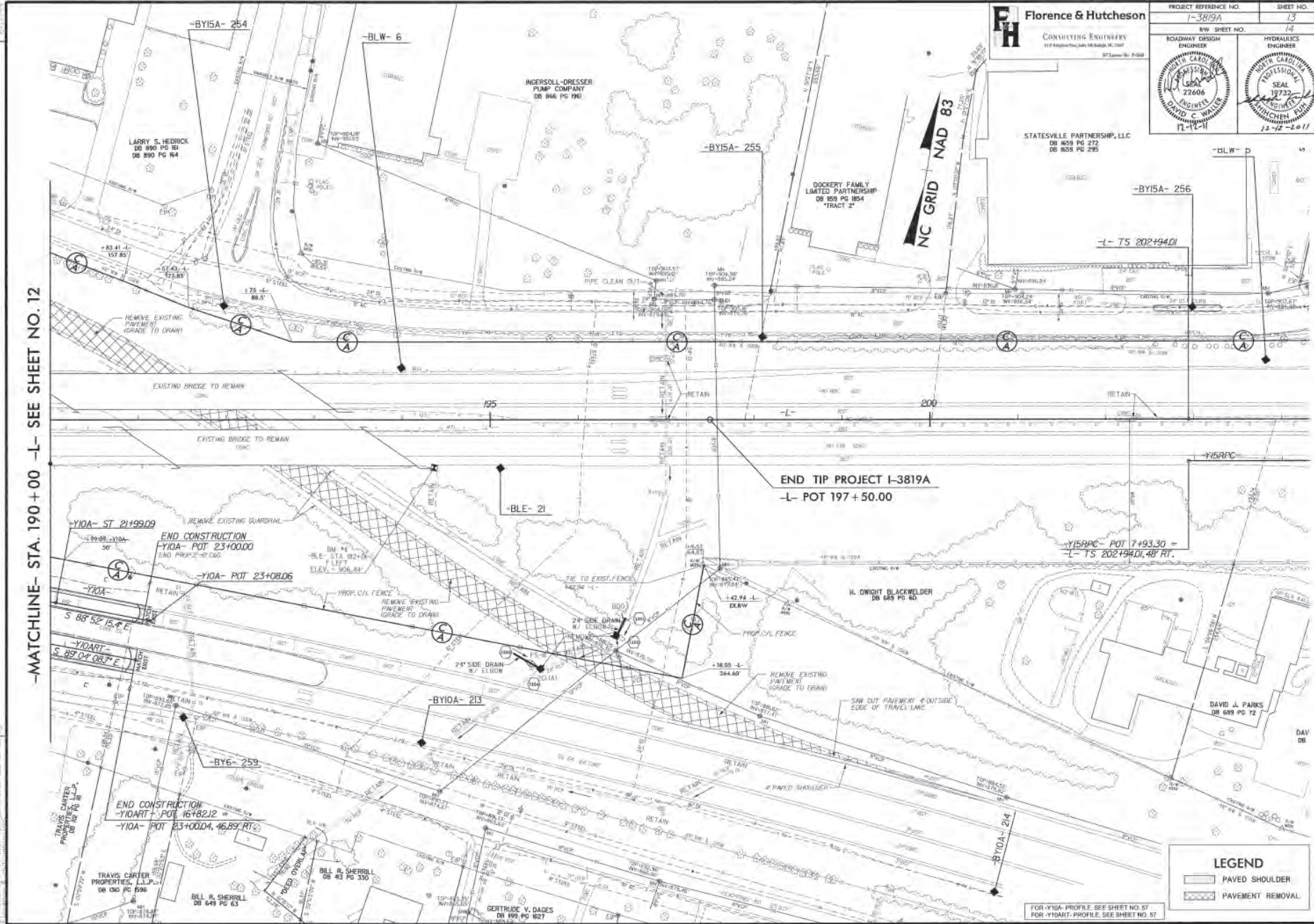
LEGEND

- PAVED SHOULDER
- PAVEMENT REMOVAL

FOR -Y10A- PROFILE, SEE SHEET NO. 57
 FOR -Y1ART- PROFILE, SEE SHEET NO. 57
 FOR DITCH DETAILS, SEE SHEET NOS. 3, 8 THROUGH 5, 5

FH Florence & Hutcheson
CONSULTING ENGINEERS
1117 Raleigh Road, Suite 100, Raleigh, NC, 27607
919-876-1100 FAX 919-876-1101

PROJECT REFERENCE NO. I-3819A	SHEET NO. 13
R/W SHEET NO. 14	HYDRAULICS ENGINEER DAVID J. PARRS SEAL 19732 12-12-2011
ROADWAY DESIGN ENGINEER DAVID C. WALKER SEAL 22606 12-12-11	PROFESSIONAL SEAL 19732 DAVID C. WALKER 12-12-2011



-MATCHLINE- STA. 190+00 -L- SEE SHEET NO. 12

END TIP PROJECT I-3819A
-L- POT 197+50.00

Y15R1PC - POT 7+93.30 =
-L- TS 202+94.01, 487 RT.

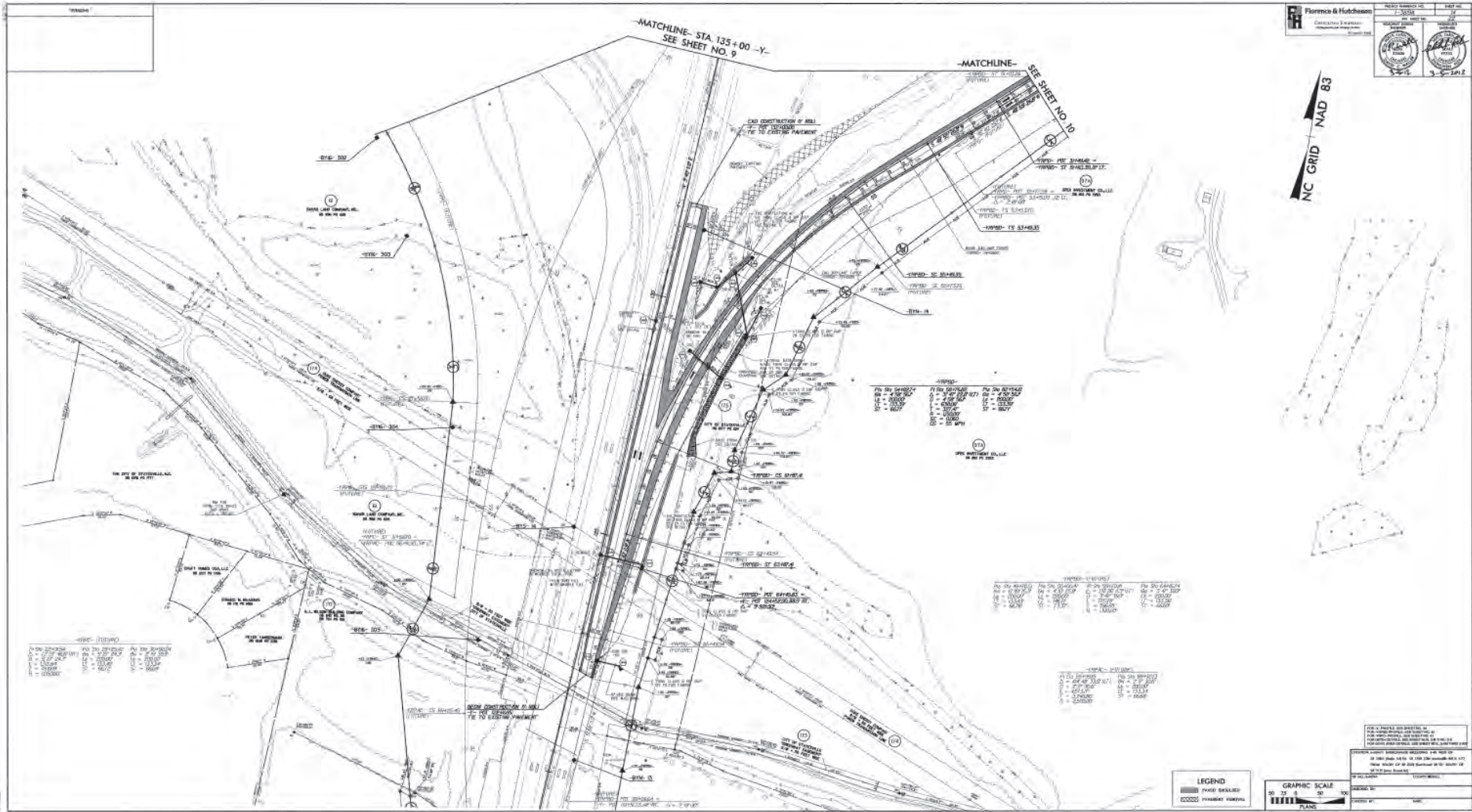
END CONSTRUCTION
-Y10ART - POT 16+82.12 =
-Y10A - POT 23+00.04, 46.89 RT.

LEGEND

	PAVED SHOULDER
	PAVEMENT REMOVAL

FOR Y10A - PROFILE, SEE SHEET NO. 57
FOR Y10ART - PROFILE, SEE SHEET NO. 57

REVISIONS



Florence & Hutcheson
 CONSULTING ENGINEERS
 300 S. 1st St., Suite 200
 Raleigh, NC 27601
 (919) 833-1111
 www.florence-hutcheson.com

PROJECT NO. FH-2018-001
 SHEET NO. 10 OF 10
 DATE: 08/15/2018
 SCALE: AS SHOWN
 DRAWN BY: J. H. SMITH
 CHECKED BY: M. J. HUTCHESON
 APPROVED BY: J. FLORENCE

THIS DRAWING IS THE PROPERTY OF FLORENCE & HUTCHESON CONSULTING ENGINEERS. IT IS TO BE USED ONLY FOR THE PROJECT AND SITE SPECIFICALLY IDENTIFIED HEREON. IT IS NOT TO BE REPRODUCED, COPIED, OR TRANSMITTED IN ANY FORM OR BY ANY MEANS, ELECTRONIC OR MECHANICAL, INCLUDING PHOTOCOPYING, RECORDING, OR BY ANY INFORMATION STORAGE AND RETRIEVAL SYSTEM, WITHOUT THE WRITTEN PERMISSION OF FLORENCE & HUTCHESON CONSULTING ENGINEERS.

FLORENCE & HUTCHESON CONSULTING ENGINEERS
 300 S. 1st St., Suite 200
 Raleigh, NC 27601
 (919) 833-1111
 www.florence-hutcheson.com

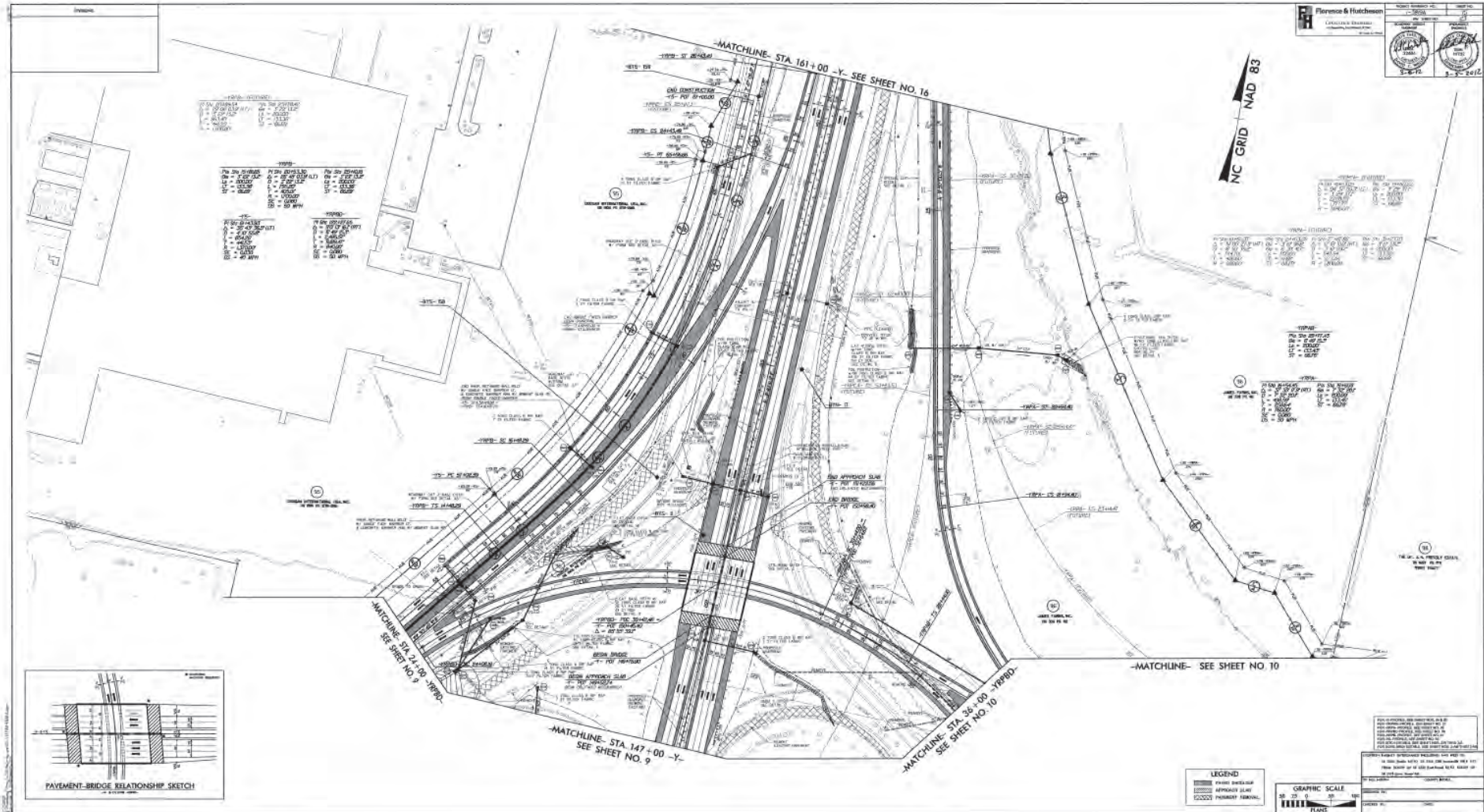
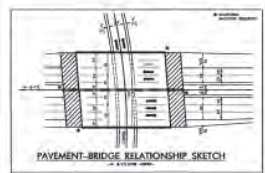


TABLE 1
 CURVE DATA

STATION	PC	PT	PI	STATION	PC	PT	PI
147+00	147+00	147+10	147+05	147+00	147+00	147+10	147+05
147+10	147+10	147+20	147+15	147+10	147+10	147+20	147+15
147+20	147+20	147+30	147+25	147+20	147+20	147+30	147+25
147+30	147+30	147+40	147+35	147+30	147+30	147+40	147+35
147+40	147+40	147+50	147+45	147+40	147+40	147+50	147+45
147+50	147+50	147+60	147+55	147+50	147+50	147+60	147+55
147+60	147+60	147+70	147+65	147+60	147+60	147+70	147+65
147+70	147+70	147+80	147+75	147+70	147+70	147+80	147+75
147+80	147+80	147+90	147+85	147+80	147+80	147+90	147+85
147+90	147+90	148+00	147+95	147+90	147+90	148+00	147+95

TABLE 2
 GRADE DATA

STATION	GRADE	STATION	GRADE
147+00	1.00%	147+50	1.00%
147+10	1.00%	147+60	1.00%
147+20	1.00%	147+70	1.00%
147+30	1.00%	147+80	1.00%
147+40	1.00%	147+90	1.00%
147+50	1.00%	148+00	1.00%



LEGEND

- ROAD CENTERLINE
- APPROACH SLAB
- PRIMEY SURFACE

GRAPHIC SCALE

0 25 50 75 100

FOOT

THIS DOCUMENT IS THE PROPERTY OF FLORENCE & HUTCHISON, INC. IT IS TO BE USED ONLY FOR THE PROJECT AND SITE SPECIFICALLY IDENTIFIED HEREON. IT IS NOT TO BE REPRODUCED, COPIED, OR TRANSMITTED IN ANY FORM OR BY ANY MEANS, ELECTRONIC OR MECHANICAL, INCLUDING PHOTOCOPYING, RECORDING, OR BY ANY INFORMATION STORAGE AND RETRIEVAL SYSTEM, WITHOUT THE WRITTEN PERMISSION OF FLORENCE & HUTCHISON, INC.

DATE: 08/15/10

PROJECT: [REDACTED]

SCALE: [REDACTED]

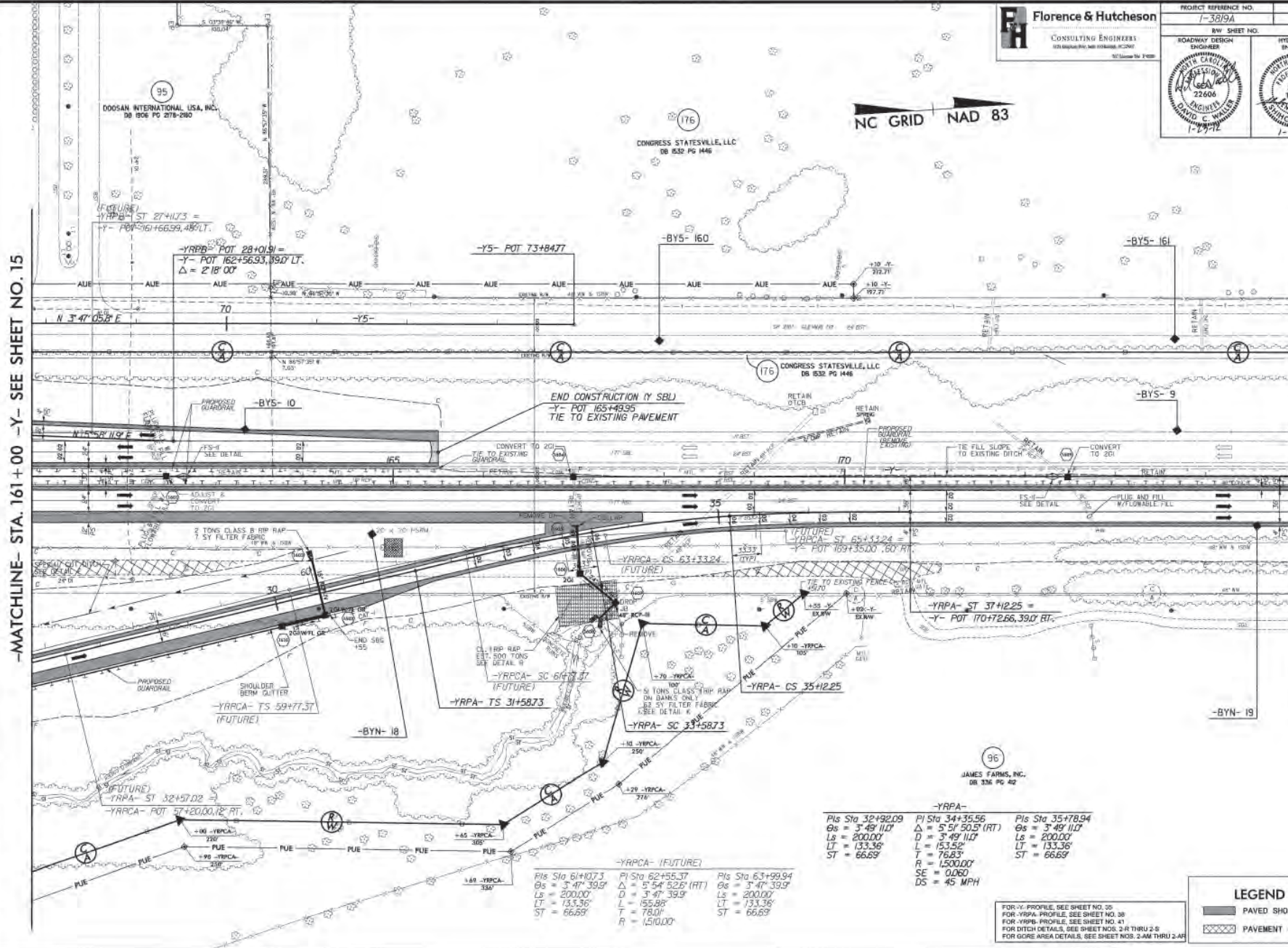
DESIGNER: [REDACTED]

CHECKER: [REDACTED]

NC GRID NAD 83

-MATCHLINE- STA. 161+00 -Y- SEE SHEET NO. 15

-MATCHLINE- STA. 175+00 -Y- SEE SHEET NO. 17



-YRPA-		
PI Sta 32+92.09	PI Sta 34+35.56	PI Sta 35+78.94
Os = 3' 47" 11.0"	Os = 5' 51" 50.5" (RT)	Os = 3' 49" 11.0"
D = 200.00'	D = 3' 49" 11.0"	Ls = 200.00'
Lt = 133.36'	L = 153.52'	Lt = 133.36'
ST = 66.69'	T = 76.83'	ST = 66.69'
	R = 1500.00'	
	SE = 0.060	
	DS = 45 MPH	

-YRPA- (FUTURE)		
PI Sta 61+10.73	PI Sta 62+55.37	PI Sta 63+99.94
Os = 3' 47" 39.5"	Os = 5' 54" 52.6" (RT)	Os = 3' 47" 39.5"
Ls = 200.00'	D = 3' 47" 39.5"	Ls = 200.00'
Lt = 133.36'	L = 155.88'	Lt = 133.36'
ST = 66.69'	T = 78.00'	ST = 66.69'
	R = 1500.00'	

LEGEND

- PAVED SHOULDER
- PAVEMENT REMOVAL

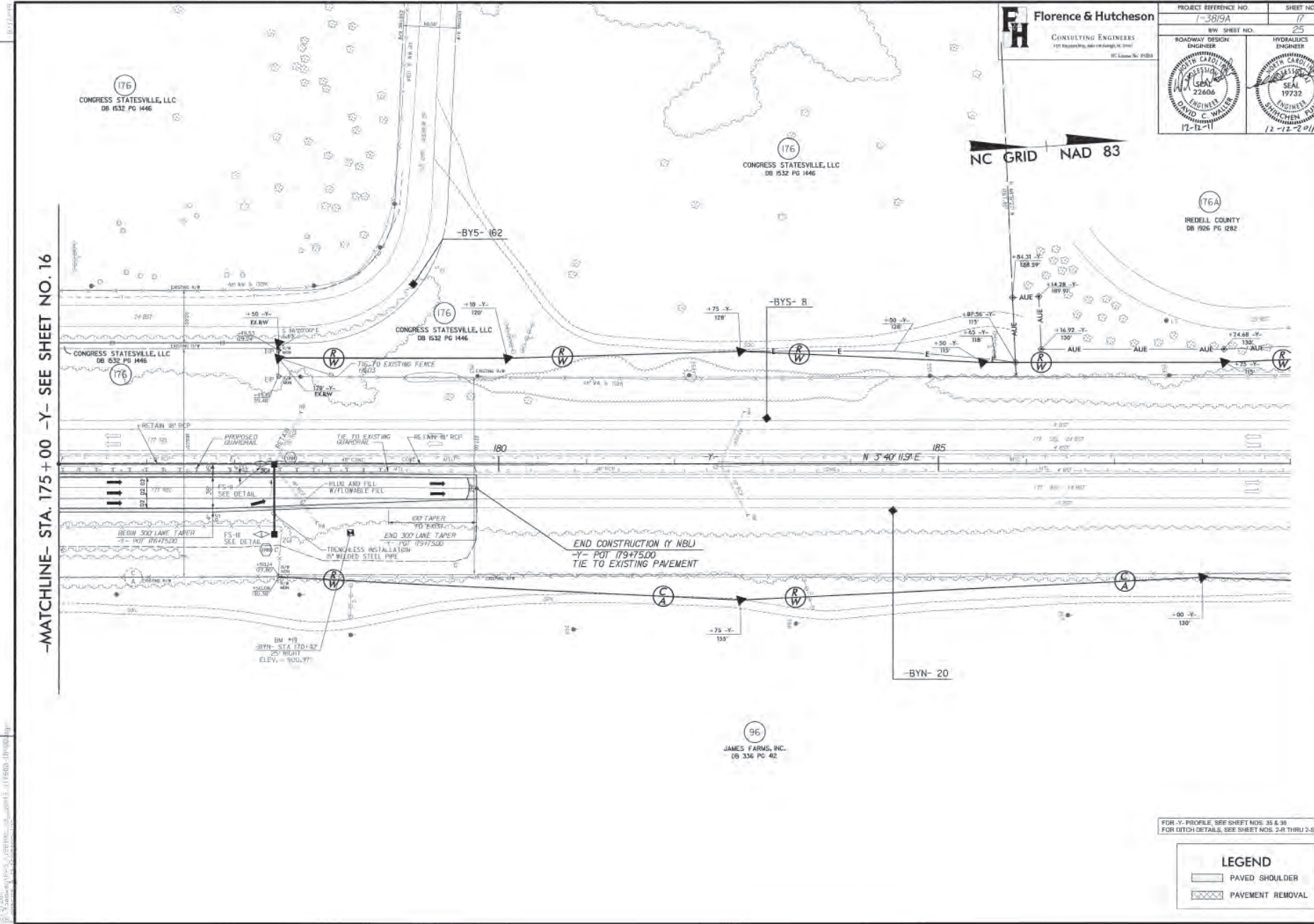
FOR -Y- PROFILE, SEE SHEET NO. 38
 FOR -YRPA- PROFILE, SEE SHEET NO. 38
 FOR DITCH DETAILS, SEE SHEET NOS. 2A THROUGH 2S
 FOR GORE AREA DETAILS, SEE SHEET NOS. 2AM THROUGH 2AR

REVISIONS

DATE PLOTTED: 1/17/12 11:58:42 AM

REVISIONS

-MATCHLINE- STA. 175+00 -Y- SEE SHEET NO. 16



FH Florence & Hutcheson
 CONSULTING ENGINEERS
 127 Poplar Street, Suite 100, Raleigh, NC 27601
 NC License No. 04881

PROJECT REFERENCE NO. 1-3819A
 SHEET NO. 17
 RW SHEET NO. 25

ROADWAY DESIGN ENGINEER
 DAVID C. WILCOX
 PROFESSIONAL SEAL 22606
 17-12-11

HYDRAULICS ENGINEER
 DAVID C. HUTCHESON
 PROFESSIONAL SEAL 19732
 12-12-2011

NC GRID NAD 83

PROJECT REFERENCE NO. 1-3819A
 SHEET NO. 17
 RW SHEET NO. 25

ROADWAY DESIGN ENGINEER
 DAVID C. WILCOX
 PROFESSIONAL SEAL 22606
 17-12-11

HYDRAULICS ENGINEER
 DAVID C. HUTCHESON
 PROFESSIONAL SEAL 19732
 12-12-2011

END CONSTRUCTION (Y NBL)
 -Y- POT 179+75.00
 TIE TO EXISTING PAVEMENT

FOR -Y- PROFILE, SEE SHEET NOS. 35 & 36
 FOR DETAIL DETAILS, SEE SHEET NOS. 2-R THRU 2-S

LEGEND

▭ PAVED SHOULDER

▨ PAVEMENT REMOVAL



NC GRID NAD 83

-YI-
 PI Sta 13+81.00
 $\Delta = 02' 18" 02.3" (RT)$
 $D = 0' 40" 26.6"$
 $L = 341.31'$
 $T = 170.68'$
 $R = 8,500.00'$
 $SE = NC$
 $Runoff = N/A$
 $DS = 40 mph$

-YI- POT 10+00.00

FOR DITCH DETAILS, SEE SHEET NOS. 2-P THRU 2-T
 FOR -YI- PROFILE, SEE SHEET NO. 44
 FOR -YIA- PROFILE, SEE SHEET NO. 45

LEGEND

-  PAVED SHOULDER
-  APPROACH SLAB
-  PAVEMENT REMOVAL

MULKEY
 ENGINEERS & ARCHITECTS
 2500 WEST 17TH AVENUE
 SUITE 200
 DENVER, CO 80202

PROJECT REFERENCE NO. 1-3819A	SHEET NO. 18
R/W SHEET NO. 28	HYDRAULICS ENGINEER SEAL 31977
ROADWAY DESIGN ENGINEER SEAL 12885	PROFESSIONAL ENGINEER SEAL 12885

12/8/2011

TRAFFIC DATA

RADIO RD.		N. CAROLINA AVE.	
5,140	7,300	740	4,760
900		600	
2010 AVERAGE		2030 DAILY TRAFFIC	
		1,100	1,500

MATCHLINE- STA. 18 + 00.00 -YI- SEE SHEET NO. 5

MATCHLINE- STA. 25 + 50.00 -YI- SEE SHEET NO. 5

NC GRID NAD 83

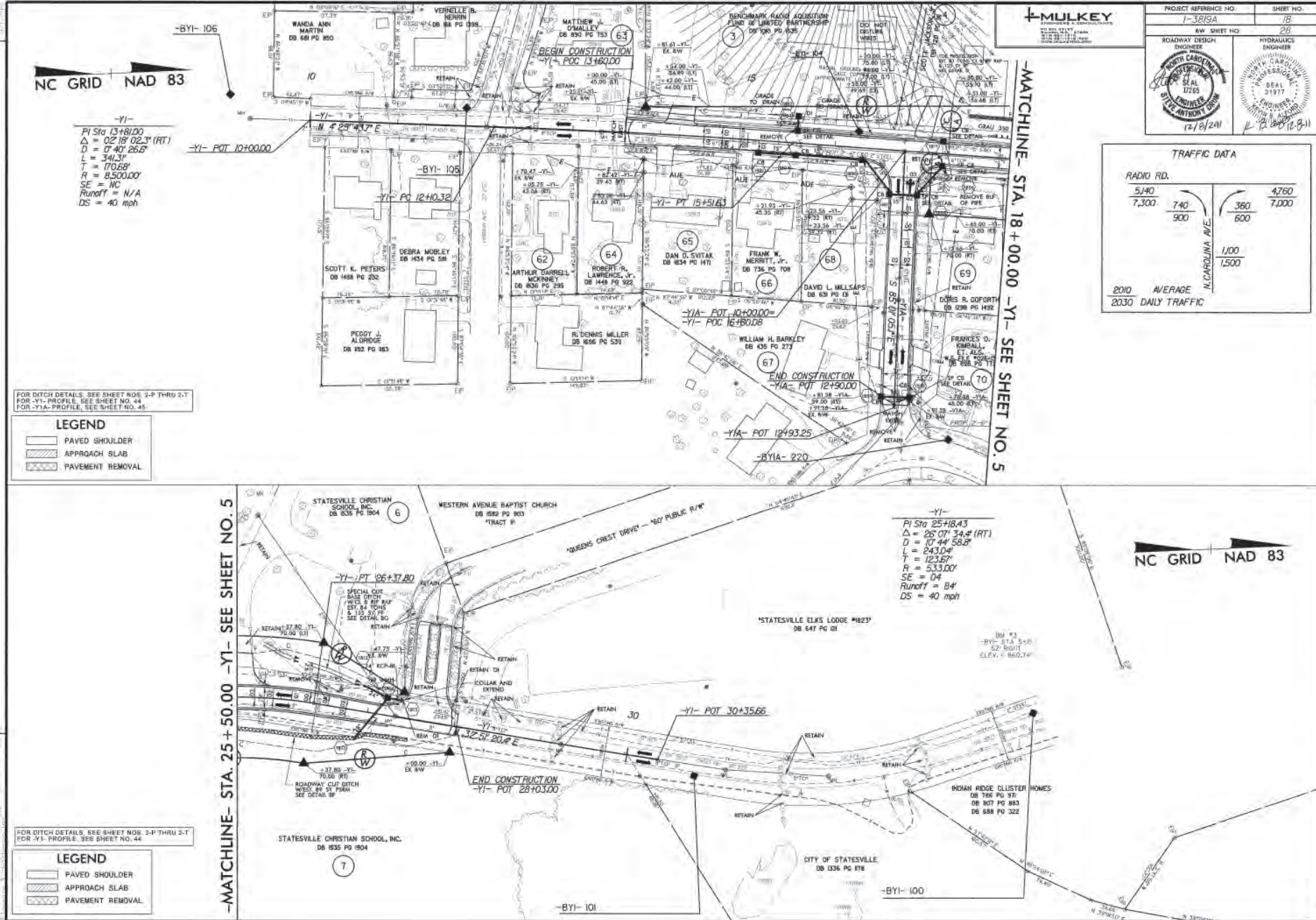
-YI-
 PI Sta 25+18.43
 $\Delta = 26' 07" 34.8" (RT)$
 $D = 10' 44" 58.8"$
 $L = 243.04'$
 $T = 123.67'$
 $R = 5,330.00'$
 $SE = 04$
 $Runoff = 84$
 $DS = 40 mph$

FOR DITCH DETAILS, SEE SHEET NOS. 2-P THRU 2-T
 FOR -YI- PROFILE, SEE SHEET NO. 44

LEGEND

-  PAVED SHOULDER
-  APPROACH SLAB
-  PAVEMENT REMOVAL

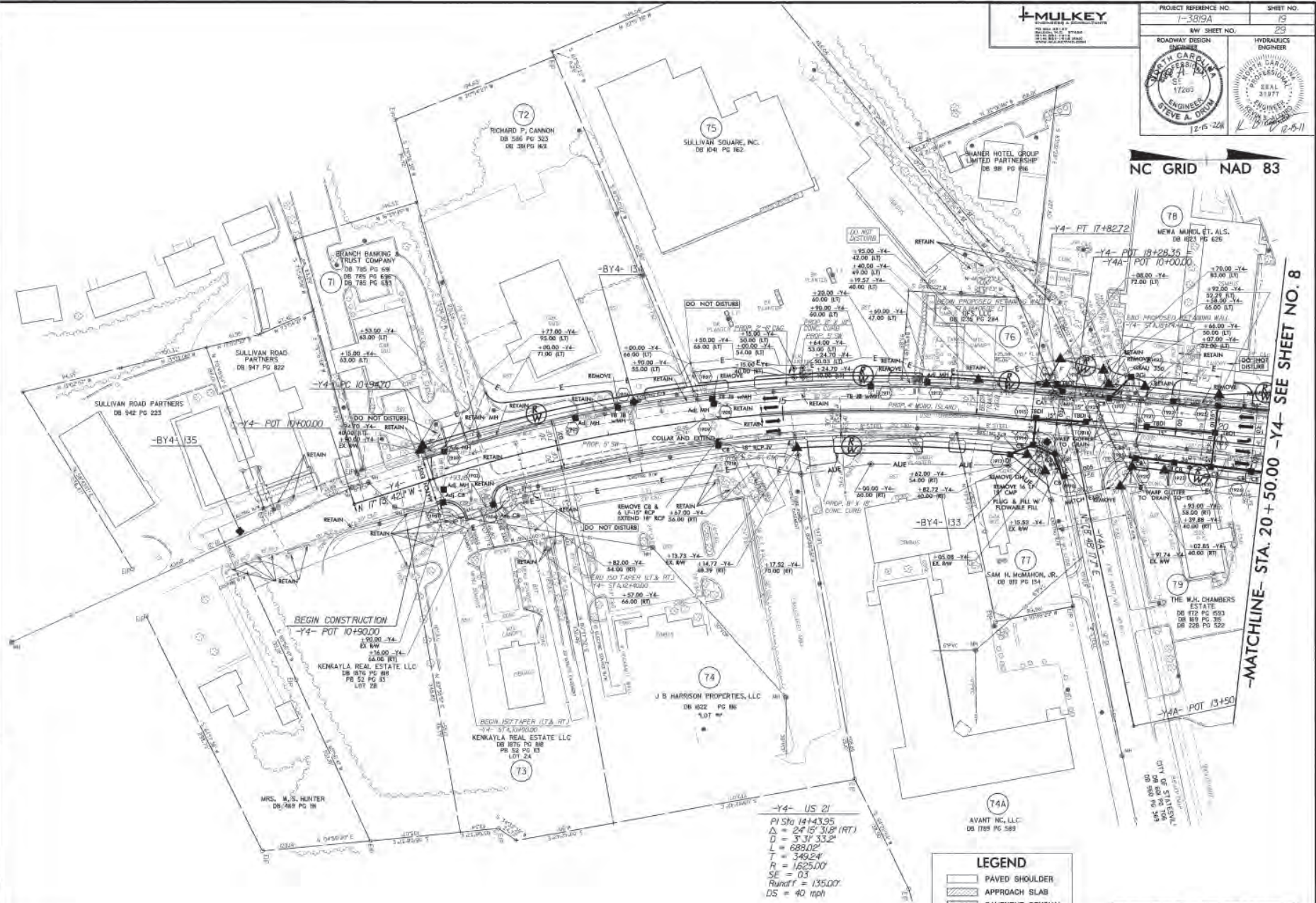
REVISIONS



NC GRID NAD 83

-MATCHLINE- STA. 20 + 50.00 -Y4- SEE SHEET NO. 8

REVISIONS



-Y4- US 21
 PI Sta 14143.95
 $\Delta = 24^{\circ} 15' 31.8''$ (RT)
 $D = 37.31' 33.2''$
 $L = 688.02'$
 $T = 349.24'$
 $R = 1625.00'$
 $SE = 03$
 $RadiusT = 135.00'$
 $DS = 40$ mph

LEGEND	
	PAVED SHOULDER
	APPROACH SLAB
	PAVEMENT REMOVAL

FOR DITCH DETAILS, SEE SHEET NOS. 2-P THRU 2-T
 FOR Y4 PROFILE, SEE SHEET NO. 47

-Y4- US 21
 PI Sta 40+39.94
 Δ = 21' OF 58.4' (LT)
 D = 3' OF 53.3'
 L = 693.81'
 T = 350.85'
 R = 1890.00'
 SE = E N157'
 DS = 40 mph

-Y5-
 PI Sta 11+08.57
 Δ = 19' 49" 11.3' (RT)
 D = 10' 18" 18.0'
 L = 192.33'
 T = 97.14'
 R = 556.00'
 SE = 04'
 DS = 40 mph

-Y8-
 PI Sta 15+04.34
 Δ = 72' 36" 06.8' (RT)
 D = 10' 44" 58.8"
 L = 675.39'
 T = 391.54'
 R = 533.00'
 SE = 04'
 DS = 40 mph

-Y5-
 PI Sta 20+15.42
 Δ = 34' 03" 17.3' (LT)
 D = 10' 44" 58.8"
 L = 316.80'
 T = 163.23'
 R = 533.00'
 SE = 04'
 DS = 40 mph

-Y5A- POT 10+00.00
BEGIN CONSTRUCTION
-Y5A- POT 10+07.96

-BY8- 226

CLASS 8 R/P R/W
 EST. 4 TONS
 EST. 14.31' R/W

STATESVILLE GOLF CENTER, INC.
 DB 1003 PG 1273

JAME LIMITED PARTNERSHIP
 DB 124 PG 1383

-YB- PT 22+04.95

-YB- PRC 18+88.18

-Y4- PC 38+87.02
-Y5A- PT 16+80.67
-Y4- POC 38+67.70
-Y5- PC 10+14.3

-BY8- 227

END APPROACH SLAB
-YB- POC 17+38.84

END BRIDGE
-YB- POC 17+75.00

DUKE ENERGY COMPANY
 POWER TRANSMISSION LINE
 R/W = 68 FEET WIDE

STANDARD V DITCH
 SEE DETAIL C

CLASS 8 R/P R/W
 EST. 2 TONS
 EST. 7.31' R/W

CRAIG MARSHALL SHARPLETUE
 DB 2043 PG 597

CITY OF STATESVILLE
 "GREENWAY" EASEMENT
 R/W = 20 FEET WIDE

CLASS 8 R/P R/W AT EMBANKMENT
 EST. 2 TONS
 EST. 20' FF

-YB- PT 12+03.76

-Y5- PT 12+03.76

STATESVILLE VIDEO, LLC
 DB 1963 PG 1920

-Y4- PC 36+88.09

-Y5- PT 12+03.76

STATESVILLE VIDEO, LLC
 DB 1963 PG 1920

-Y4- PC 36+88.09

-Y5- PT 12+03.76

STATESVILLE VIDEO, LLC
 DB 1963 PG 1920

-Y4- PC 36+88.09

-Y5- PT 12+03.76

STATESVILLE VIDEO, LLC
 DB 1963 PG 1920

-Y4- PC 36+88.09

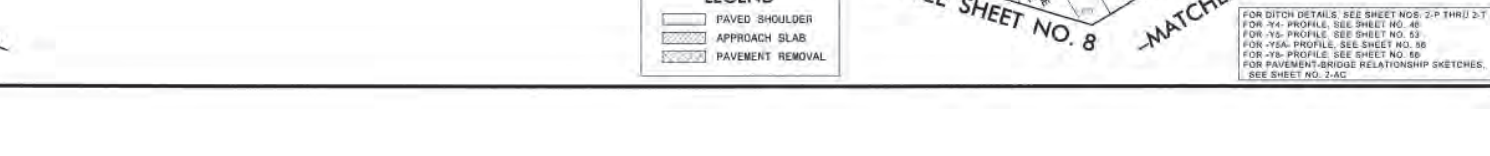
-Y5- PT 12+03.76

STATESVILLE VIDEO, LLC
 DB 1963 PG 1920

-Y4- PC 36+88.09

-Y5- PT 12+03.76

STATESVILLE VIDEO, LLC
 DB 1963 PG 1920



MULKEY
 CONSULTING ENGINEERS

PROJECT REFERENCE NO. 1-3191A
 SHEET NO. 20

ROADWAY DESIGN
 NORTH CAROLINA PROFESSIONAL SEAL 17265
 12/8/2011

HYDRAULICS ENGINEER
 NORTH CAROLINA PROFESSIONAL SEAL 3197
 12/8/2011

TRAFFIC DATA

34,920	7,040
44,200	8,000
SUNSET HILL RD. GLENWAY DR.	
7,540	23,360
9,700	27,200
6,280	16,320
8,100	19,200
2010 AVERAGE 44,200	
2030 DAILY TRAFFIC 55,400	

MATCHLINE- SEE SHEET NO. 20A

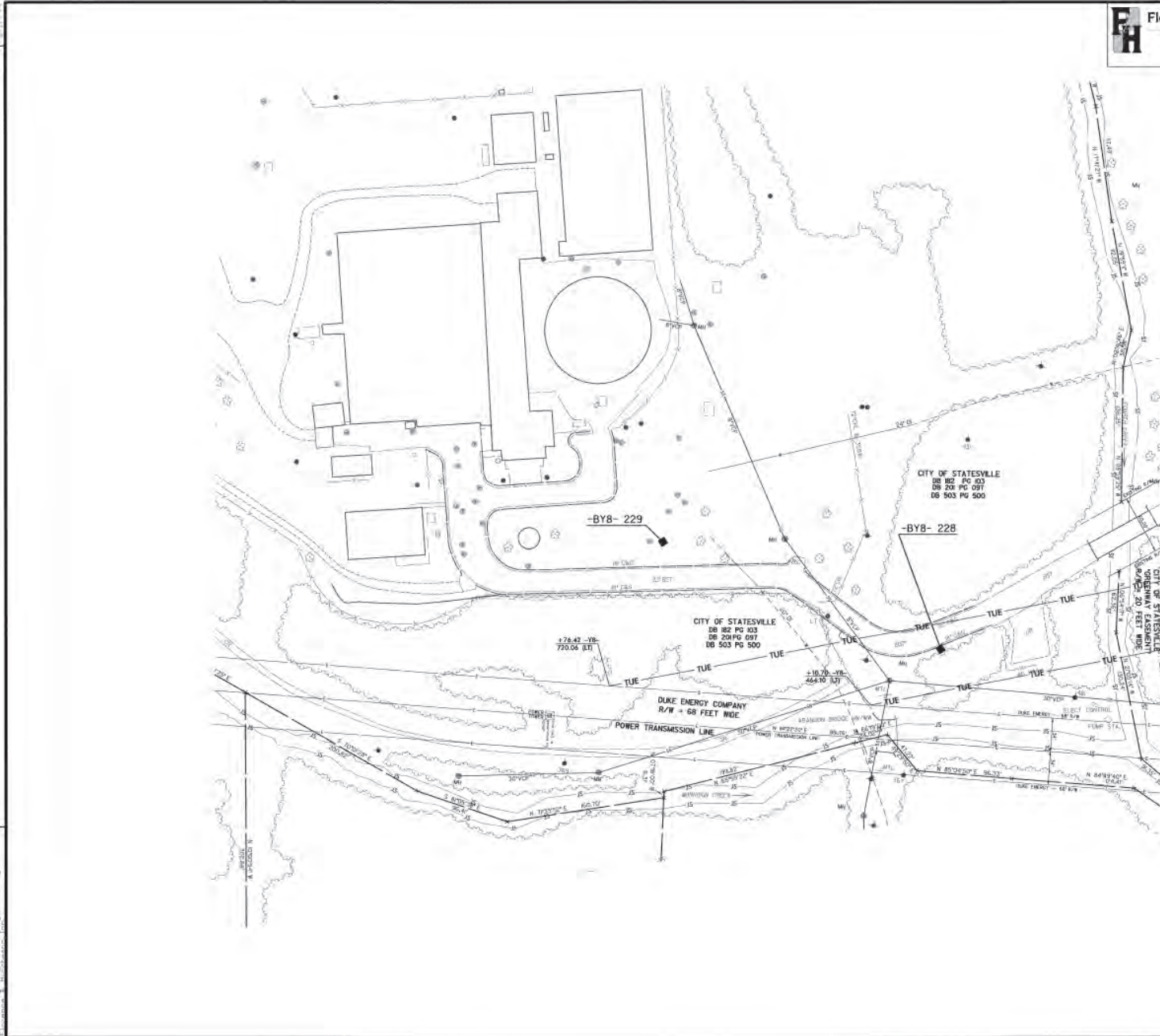
SEE SHEET NO. 8
 MATCHLINE- STA. 15+00.00 -Y8-

MATCHLINE- STA. 35+00.00 -Y4- SEE SHEET NO. 8
 MATCHLINE- STA. 14+50.00 -Y5- SEE SHEET NO. 8

FOR DITCH DETAILS SEE SHEET NOS. 2-P THRU 2-T
 FOR -Y4- PROFILE SEE SHEET NO. 8
 FOR -Y5- PROFILE SEE SHEET NO. 8
 FOR -Y8A- PROFILE SEE SHEET NO. 8
 FOR -Y8- PROFILE SEE SHEET NO. 8
 FOR PAVEMENT-BRIDGE RELATIONSHIP SKETCHES SEE SHEET NO. 2-AC

REVISIONS

DATE: 11/11/11
BY: [Signature]
CHECKED: [Signature]





FH Florence & Hutcheson
CONSULTING ENGINEERS
1425 Kingsley Way, Suite 100, Raleigh, NC 27607
NCE License No. 9188

PROJECT REFERENCE NO. 1-3819A	SHEET NO. 20A
RW SHEET NO.	
ROADWAY DESIGN ENGINEER	



-MATCHLINE- SEE SHEET NO. 20

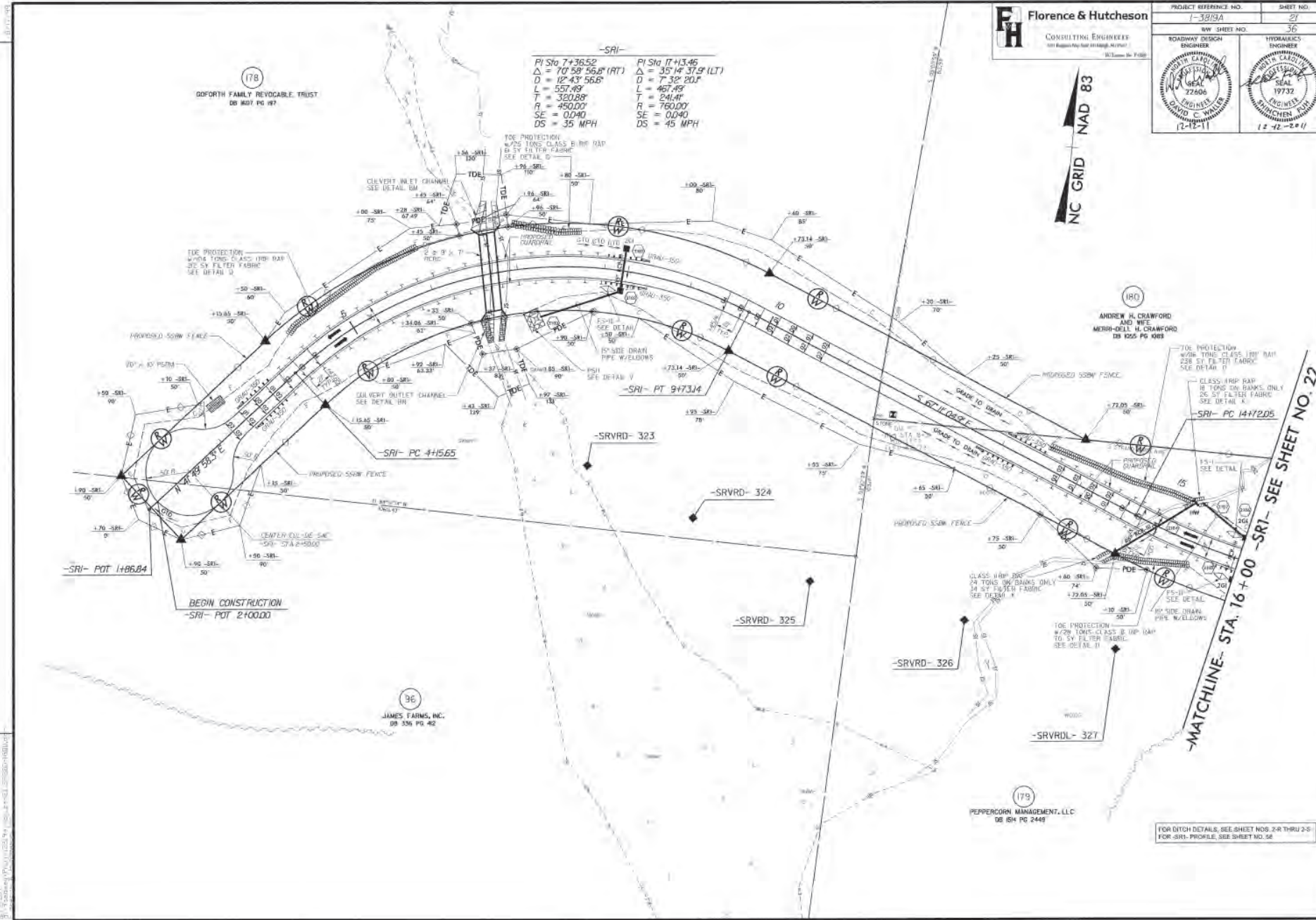
FH Florence & Hutcheson
 CONSULTING ENGINEERS
 101 Progress Way, Raleigh, NC 27607
 (919) 876-1100

PROJECT REFERENCE NO.	SHEET NO.
1-3819A	21
BW SHEET NO.	36
ROADWAY DESIGN ENGINEER	HYDRAULICS ENGINEER
	

NC GRID NAD 83

-SRI-

PI Sta 7+36.52	PI Sta 11+13.46
$\Delta = 12^{\circ} 58' 56.6"$ (RT)	$\Delta = 35^{\circ} 14' 37.9"$ (LT)
$D = 12^{\circ} 43' 56.6"$	$D = 7^{\circ} 38' 20.1"$
$L = 557.49$	$L = 467.49$
$T = 320.88$	$T = 241.41$
$R = 450.00'$	$R = 760.00'$
$SE = 0.040$	$SE = 0.040$
$DS = 35$ MPH	$DS = 45$ MPH



(178)
 GOFORTH FAMILY REVOCABLE TRUST
 DB 807 PG 47

(180)
 ANDREW H. CRAWFORD
 AND WIFE
 MERRI-DELL H. CRAWFORD
 DB 1255 PG 1083

(96)
 JAMES FARMS, INC.
 DB 336 PG 42

(179)
 PEPPER CORN MANAGEMENT, LLC
 DB 654 PG 2448

FOR DITCH DETAILS, SEE SHEET NOS. 2-R THRU 2-S
 FOR -SRI- PROFILE, SEE SHEET NO. 52

-MATCHLINE- STA. 16+00 -SRI- SEE SHEET NO. 22

BEGIN CONSTRUCTION
 -SRI- POT 2+00.00

-SRI- POT 1+66.84

-SRI- PC 4+15.65

-SRV- 323

-SRV- 324

-SRV- 325

-SRV- 326

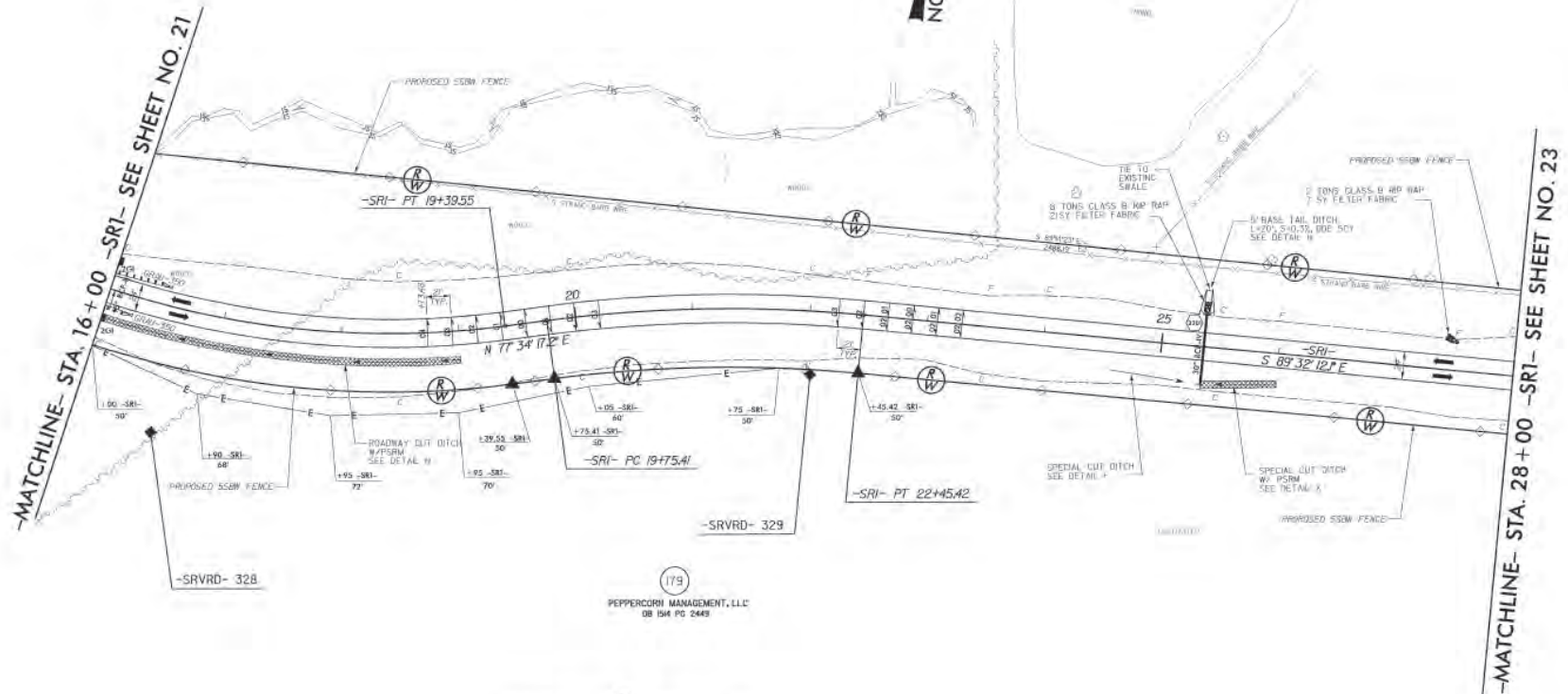
-SRV- 327

REVISIONS
 1. 11/11/11
 2. 11/11/11
 3. 11/11/11
 4. 11/11/11
 5. 11/11/11
 6. 11/11/11
 7. 11/11/11
 8. 11/11/11
 9. 11/11/11
 10. 11/11/11
 11. 11/11/11
 12. 11/11/11
 13. 11/11/11
 14. 11/11/11
 15. 11/11/11
 16. 11/11/11
 17. 11/11/11
 18. 11/11/11
 19. 11/11/11
 20. 11/11/11
 21. 11/11/11
 22. 11/11/11
 23. 11/11/11
 24. 11/11/11
 25. 11/11/11
 26. 11/11/11
 27. 11/11/11
 28. 11/11/11
 29. 11/11/11
 30. 11/11/11
 31. 11/11/11
 32. 11/11/11
 33. 11/11/11
 34. 11/11/11
 35. 11/11/11
 36. 11/11/11
 37. 11/11/11
 38. 11/11/11
 39. 11/11/11
 40. 11/11/11
 41. 11/11/11
 42. 11/11/11
 43. 11/11/11
 44. 11/11/11
 45. 11/11/11
 46. 11/11/11
 47. 11/11/11
 48. 11/11/11
 49. 11/11/11
 50. 11/11/11
 51. 11/11/11
 52. 11/11/11
 53. 11/11/11
 54. 11/11/11
 55. 11/11/11
 56. 11/11/11
 57. 11/11/11
 58. 11/11/11
 59. 11/11/11
 60. 11/11/11
 61. 11/11/11
 62. 11/11/11
 63. 11/11/11
 64. 11/11/11
 65. 11/11/11
 66. 11/11/11
 67. 11/11/11
 68. 11/11/11
 69. 11/11/11
 70. 11/11/11
 71. 11/11/11
 72. 11/11/11
 73. 11/11/11
 74. 11/11/11
 75. 11/11/11
 76. 11/11/11
 77. 11/11/11
 78. 11/11/11
 79. 11/11/11
 80. 11/11/11
 81. 11/11/11
 82. 11/11/11
 83. 11/11/11
 84. 11/11/11
 85. 11/11/11
 86. 11/11/11
 87. 11/11/11
 88. 11/11/11
 89. 11/11/11
 90. 11/11/11
 91. 11/11/11
 92. 11/11/11
 93. 11/11/11
 94. 11/11/11
 95. 11/11/11
 96. 11/11/11
 97. 11/11/11
 98. 11/11/11
 99. 11/11/11
 100. 11/11/11

PROJECT REFERENCE NO. 1-3819A	SHEET NO. 22
ROADWAY DESIGN ENGINEER DANIEL C. HUTCHESON 12-12-11	HYDRAULICS ENGINEER DANIEL C. HUTCHESON 12-12-2011

(180)
 ANDREW H. CRANFORD
 AND WIFE
 MERRI-DELL H. CRANFORD
 103 6555 PG. 0083

NC GRID NAD 83



(179)
 PEPPERCORN MANAGEMENT, LLC
 98 154 PG. 2449

-SRI-



PI Sta 17+13.46	PI Sta 21+10.99
$\Delta = 35' 14" 37.9" (LT)$	$\Delta = 12' 53" 30.7" (RT)$
$D = 7' 32" 20.1"$	$D = 4' 46" 28.7"$
$L = 467.49'$	$L = 270.00'$
$T = 241.41'$	$T = 135.58'$
$R = 760.00'$	$R = 1200.00'$
$SE = 0.040$	$SE = 0.030$
$DS = 45 \text{ MPH}$	$DS = 35 \text{ MPH}$

REVISIONS

DATE: 12/12/11
 DRAWN BY: [illegible]
 CHECKED BY: [illegible]
 APPROVED BY: [illegible]

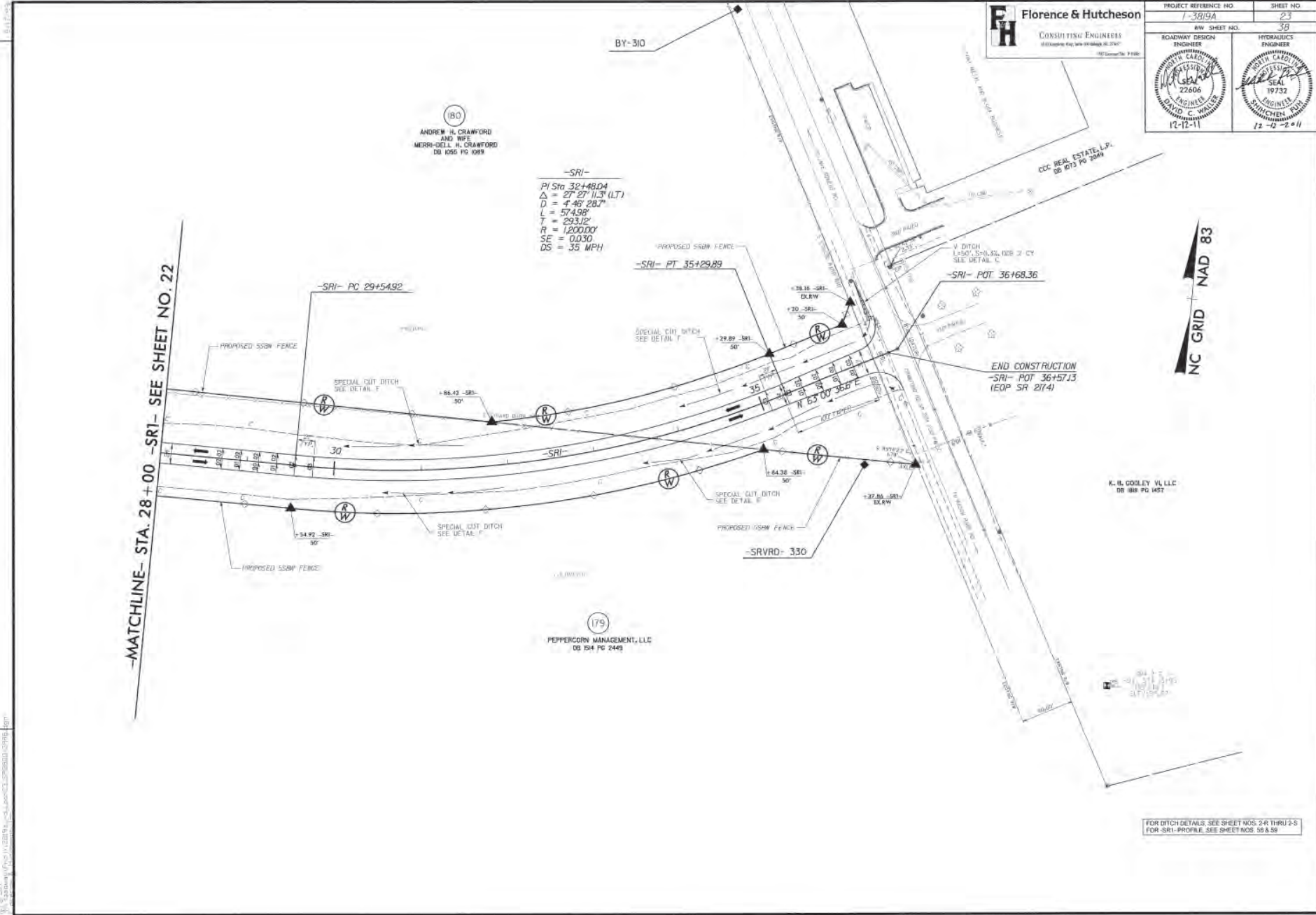
FOR DITCH DETAILS, SEE SHEET NOS. 23 THROUGH 25
 FOR SRI-PROFILE, SEE SHEET NO. 24

FH Florence & Hutcheson
 CONSULTING ENGINEERS
 8100 Corporate Way, Suite 100, Charlotte, NC 28226
 704.375.7800

PROJECT REFERENCE NO. 1-3819A	SHEET NO. 23
R/W SHEET NO. 38	
ROADWAY DESIGN ENGINEER 	HYDRAULICS ENGINEER 

-MATCHLINE- STA. 28+00 -SRI- SEE SHEET NO. 22

-SRI-
 PI Sta 32+48.04
 $\Delta = 27' 27" 11.3" (L.T.)$
 $D = 4' 46" 28.7"$
 $L = 574.58'$
 $T = 293.12'$
 $R = 1,200.00'$
 $SE = 0.030$
 $DS = 35 MPH$



NC GRID NAD 83

FOR DITCH DETAILS, SEE SHEET NOS. 2-R THRU 2-S
 FOR -SRI- PROFILE, SEE SHEET NOS. 58 & 59

REVISIONS

1. 12/12/11: AS BUILT FOR STA. 28+00 TO 36+00
 2. 12/12/11: AS BUILT FOR STA. 36+00 TO 36+57.13
 3. 12/12/11: AS BUILT FOR STA. 36+57.13 TO 36+168.36
 4. 12/12/11: AS BUILT FOR STA. 36+168.36 TO 36+57.13
 5. 12/12/11: AS BUILT FOR STA. 36+57.13 TO 36+168.36
 6. 12/12/11: AS BUILT FOR STA. 36+168.36 TO 36+57.13
 7. 12/12/11: AS BUILT FOR STA. 36+57.13 TO 36+168.36
 8. 12/12/11: AS BUILT FOR STA. 36+168.36 TO 36+57.13
 9. 12/12/11: AS BUILT FOR STA. 36+57.13 TO 36+168.36
 10. 12/12/11: AS BUILT FOR STA. 36+168.36 TO 36+57.13
 11. 12/12/11: AS BUILT FOR STA. 36+57.13 TO 36+168.36
 12. 12/12/11: AS BUILT FOR STA. 36+168.36 TO 36+57.13
 13. 12/12/11: AS BUILT FOR STA. 36+57.13 TO 36+168.36
 14. 12/12/11: AS BUILT FOR STA. 36+168.36 TO 36+57.13
 15. 12/12/11: AS BUILT FOR STA. 36+57.13 TO 36+168.36
 16. 12/12/11: AS BUILT FOR STA. 36+168.36 TO 36+57.13
 17. 12/12/11: AS BUILT FOR STA. 36+57.13 TO 36+168.36
 18. 12/12/11: AS BUILT FOR STA. 36+168.36 TO 36+57.13
 19. 12/12/11: AS BUILT FOR STA. 36+57.13 TO 36+168.36
 20. 12/12/11: AS BUILT FOR STA. 36+168.36 TO 36+57.13
 21. 12/12/11: AS BUILT FOR STA. 36+57.13 TO 36+168.36
 22. 12/12/11: AS BUILT FOR STA. 36+168.36 TO 36+57.13
 23. 12/12/11: AS BUILT FOR STA. 36+57.13 TO 36+168.36
 24. 12/12/11: AS BUILT FOR STA. 36+168.36 TO 36+57.13
 25. 12/12/11: AS BUILT FOR STA. 36+57.13 TO 36+168.36
 26. 12/12/11: AS BUILT FOR STA. 36+168.36 TO 36+57.13
 27. 12/12/11: AS BUILT FOR STA. 36+57.13 TO 36+168.36
 28. 12/12/11: AS BUILT FOR STA. 36+168.36 TO 36+57.13
 29. 12/12/11: AS BUILT FOR STA. 36+57.13 TO 36+168.36
 30. 12/12/11: AS BUILT FOR STA. 36+168.36 TO 36+57.13
 31. 12/12/11: AS BUILT FOR STA. 36+57.13 TO 36+168.36
 32. 12/12/11: AS BUILT FOR STA. 36+168.36 TO 36+57.13
 33. 12/12/11: AS BUILT FOR STA. 36+57.13 TO 36+168.36
 34. 12/12/11: AS BUILT FOR STA. 36+168.36 TO 36+57.13
 35. 12/12/11: AS BUILT FOR STA. 36+57.13 TO 36+168.36
 36. 12/12/11: AS BUILT FOR STA. 36+168.36 TO 36+57.13
 37. 12/12/11: AS BUILT FOR STA. 36+57.13 TO 36+168.36
 38. 12/12/11: AS BUILT FOR STA. 36+168.36 TO 36+57.13
 39. 12/12/11: AS BUILT FOR STA. 36+57.13 TO 36+168.36
 40. 12/12/11: AS BUILT FOR STA. 36+168.36 TO 36+57.13
 41. 12/12/11: AS BUILT FOR STA. 36+57.13 TO 36+168.36
 42. 12/12/11: AS BUILT FOR STA. 36+168.36 TO 36+57.13
 43. 12/12/11: AS BUILT FOR STA. 36+57.13 TO 36+168.36
 44. 12/12/11: AS BUILT FOR STA. 36+168.36 TO 36+57.13
 45. 12/12/11: AS BUILT FOR STA. 36+57.13 TO 36+168.36
 46. 12/12/11: AS BUILT FOR STA. 36+168.36 TO 36+57.13
 47. 12/12/11: AS BUILT FOR STA. 36+57.13 TO 36+168.36
 48. 12/12/11: AS BUILT FOR STA. 36+168.36 TO 36+57.13
 49. 12/12/11: AS BUILT FOR STA. 36+57.13 TO 36+168.36
 50. 12/12/11: AS BUILT FOR STA. 36+168.36 TO 36+57.13
 51. 12/12/11: AS BUILT FOR STA. 36+57.13 TO 36+168.36
 52. 12/12/11: AS BUILT FOR STA. 36+168.36 TO 36+57.13
 53. 12/12/11: AS BUILT FOR STA. 36+57.13 TO 36+168.36
 54. 12/12/11: AS BUILT FOR STA. 36+168.36 TO 36+57.13
 55. 12/12/11: AS BUILT FOR STA. 36+57.13 TO 36+168.36
 56. 12/12/11: AS BUILT FOR STA. 36+168.36 TO 36+57.13
 57. 12/12/11: AS BUILT FOR STA. 36+57.13 TO 36+168.36
 58. 12/12/11: AS BUILT FOR STA. 36+168.36 TO 36+57.13
 59. 12/12/11: AS BUILT FOR STA. 36+57.13 TO 36+168.36
 60. 12/12/11: AS BUILT FOR STA. 36+168.36 TO 36+57.13
 61. 12/12/11: AS BUILT FOR STA. 36+57.13 TO 36+168.36
 62. 12/12/11: AS BUILT FOR STA. 36+168.36 TO 36+57.13
 63. 12/12/11: AS BUILT FOR STA. 36+57.13 TO 36+168.36
 64. 12/12/11: AS BUILT FOR STA. 36+168.36 TO 36+57.13
 65. 12/12/11: AS BUILT FOR STA. 36+57.13 TO 36+168.36
 66. 12/12/11: AS BUILT FOR STA. 36+168.36 TO 36+57.13
 67. 12/12/11: AS BUILT FOR STA. 36+57.13 TO 36+168.36
 68. 12/12/11: AS BUILT FOR STA. 36+168.36 TO 36+57.13
 69. 12/12/11: AS BUILT FOR STA. 36+57.13 TO 36+168.36
 70. 12/12/11: AS BUILT FOR STA. 36+168.36 TO 36+57.13
 71. 12/12/11: AS BUILT FOR STA. 36+57.13 TO 36+168.36
 72. 12/12/11: AS BUILT FOR STA. 36+168.36 TO 36+57.13
 73. 12/12/11: AS BUILT FOR STA. 36+57.13 TO 36+168.36
 74. 12/12/11: AS BUILT FOR STA. 36+168.36 TO 36+57.13
 75. 12/12/11: AS BUILT FOR STA. 36+57.13 TO 36+168.36
 76. 12/12/11: AS BUILT FOR STA. 36+168.36 TO 36+57.13
 77. 12/12/11: AS BUILT FOR STA. 36+57.13 TO 36+168.36
 78. 12/12/11: AS BUILT FOR STA. 36+168.36 TO 36+57.13
 79. 12/12/11: AS BUILT FOR STA. 36+57.13 TO 36+168.36
 80. 12/12/11: AS BUILT FOR STA. 36+168.36 TO 36+57.13
 81. 12/12/11: AS BUILT FOR STA. 36+57.13 TO 36+168.36
 82. 12/12/11: AS BUILT FOR STA. 36+168.36 TO 36+57.13
 83. 12/12/11: AS BUILT FOR STA. 36+57.13 TO 36+168.36
 84. 12/12/11: AS BUILT FOR STA. 36+168.36 TO 36+57.13
 85. 12/12/11: AS BUILT FOR STA. 36+57.13 TO 36+168.36
 86. 12/12/11: AS BUILT FOR STA. 36+168.36 TO 36+57.13
 87. 12/12/11: AS BUILT FOR STA. 36+57.13 TO 36+168.36
 88. 12/12/11: AS BUILT FOR STA. 36+168.36 TO 36+57.13
 89. 12/12/11: AS BUILT FOR STA. 36+57.13 TO 36+168.36
 90. 12/12/11: AS BUILT FOR STA. 36+168.36 TO 36+57.13
 91. 12/12/11: AS BUILT FOR STA. 36+57.13 TO 36+168.36
 92. 12/12/11: AS BUILT FOR STA. 36+168.36 TO 36+57.13
 93. 12/12/11: AS BUILT FOR STA. 36+57.13 TO 36+168.36
 94. 12/12/11: AS BUILT FOR STA. 36+168.36 TO 36+57.13
 95. 12/12/11: AS BUILT FOR STA. 36+57.13 TO 36+168.36
 96. 12/12/11: AS BUILT FOR STA. 36+168.36 TO 36+57.13
 97. 12/12/11: AS BUILT FOR STA. 36+57.13 TO 36+168.36
 98. 12/12/11: AS BUILT FOR STA. 36+168.36 TO 36+57.13
 99. 12/12/11: AS BUILT FOR STA. 36+57.13 TO 36+168.36
 100. 12/12/11: AS BUILT FOR STA. 36+168.36 TO 36+57.13